

WORKING PAPER • No. 2021-1

Targeting, Screening, and Retention: Evidence from California's Food Stamps Program

Matthew Unrath

February 2021



www.capolicylab.org
[@capolicylab](https://twitter.com/capolicylab)

Targeting, Screening, and Retention: Evidence from California's Food Stamps Program

Matthew Unrath*

February 3, 2021

Click [here](#) for the latest version.

Abstract

Many households eligible for the Supplemental Nutrition Assistance Program (SNAP) do not enroll. Using a new dataset of monthly enrollment histories for all SNAP participants in California between 2005 and 2020, I document how procedures used to verify program eligibility lower retention and contribute to incomplete take-up. I show that the majority of households who leave SNAP appear income eligible in the months before and after their exit. I also find that these reporting requirements most deter enrollment among seemingly more advantaged households. Ineligible households, as well as those with higher earnings and low predicted food security, are more likely to exit in a reporting month. Though they improve targeting, I present evidence that reducing the frequency of these eligibility verifications can be an efficient way to increase program participation and rivals the welfare effects of other possible SNAP expansions.

*Goldman School of Public Policy, UC Berkeley, unrath@berkeley.edu

I thank Justin Germain, Taylor McKay, and Anna Zhao for excellent research assistance, as well as Hilary Hoynes and Jesse Rothstein for their invaluable feedback and guidance. I also thank Kim McKoy-Wade, Alexis Fernandez, Brittney Gossard, Jianjun Chen, Jennifer Espera, Dionne Evans-Dean, Xing Shen, Ying Her, and Akhtar Khan for their help with accessing these data. Support for this research was provided in part by University of Wisconsin Institute for Research on Poverty, the National Institute on Aging, and the Robert Wood Johnson Foundation's Policies for Action program. The views expressed here do not necessarily reflect the views of the Foundation.

1 Introduction

The Supplemental Nutrition Assistance Program (SNAP), commonly known as food stamps, is a critical part of the American social safety net. In 2019, around 36 million Americans were enrolled in SNAP in any given month, and altogether, received over \$60 billion in assistance. Although SNAP receipt is associated with reduced food insecurity, reduced poverty, lower criminal recidivism, improved short- and long-term health outcomes, and for children, greater life expectancy and higher lifetime earnings (Ratcliffe, McKernan, and Zhang, 2011; Mabli and Ohls, 2015; Almond, Hoynes, and Schanzenbach, 2011; Bronchetti, Christensen, and Hoynes, 2019; East, 2020; Gregory and Deb, 2015; Oddo and Mabli, 2015; Morrissey and Miller, 2020; Hoynes, Schanzenbach, and Almond, 2016; Tuttle, 2019; Bailey, Hoynes, Rossin-Slater, and Walker, 2020), roughly one in six eligible individuals do not enroll (Cunyngham et al., 2018). Incomplete take-up has long concerned policymakers, and significant public and private resources have been expended to conduct outreach and increase awareness of the program in order to encourage eligible households to apply.

Alongside soliciting new applications, policymakers and stakeholders can increase participation by improving program retention. In order to confirm they are still eligible, most SNAP recipients must periodically report whether their income, household composition, or expenses have changed, and the burden of these administrative processes can induce still-eligible households to leave the program. Several studies document how these eligibility verifications are associated with program exits and shortened enrollment spells (Kabbani and Wilde, 2003; Ribar, Edelhoch, and Liu, 2008; Gray, 2019; Homonoff and Somerville, 2019).

Since SNAP is a means-tested program, some degree of ongoing eligibility verification is necessary. Policymakers can only choose the frequency and rigor with which these verification are administered. When they do, they balance two competing objectives: promote efficient redistribution, and minimize the costs that these processes impose on enrollees and the government (Kleven and Kopczuk, 2011). Less frequent reporting allows ineligible households to remain enrolled longer, while more burdensome ordeals risk screening out both eligible and ineligible households.

Despite the importance of this policy decision, there is little evidence about how current reporting requirements affect the composition of program caseloads or the size of these Type 1 and Type 1 errors. While administrative burdens clearly lower enrollment, it remains unclear to what degree they screen out eligible versus ineligible households and how any screening benefits compare to the cost of incomplete take-up. This evidence is critical for policymakers to judge whether current policy is maximally efficient and equitable.

In this paper, I study how reporting requirements affect participation in SNAP in California, the state with the highest SNAP enrollment and one of the lowest take-up rates (Cunyngham et al., 2018). I use a new administrative dataset covering individual- and household-level enrollment in the program between 2005 and 2020, to which I merge quarterly earnings data from 2012 onward as well as monthly case-level benefit issuance records from 2010 onward. The breadth

of these data allow me to document several new facts about program enrollment, churn, and the effects of administrative burdens.

I show that program exits coincide with reporting schedules, and that nearly half of new entrants leave the program by their first eligibility screen at six months. I also show that the large majority of households who exit the program appear income eligible in the months before and after their exit. Further, I show that lengthening the period between when households must verify eligibility increases retention.

I also find that reporting requirements improve targeting by screening out seemingly more advantaged households. I document that ineligible households, households with higher earnings, and households with lower benefit amounts are all more likely to exit in a reporting month. I also conclude that household characteristics associated with higher food insecurity are negatively associated with likelihood of exit. Finally, I show how quicker rebounds in earned income after enrollment correspond with earlier exits from the program.

To identify the marginal effect of reporting requirements on the composition of the program caseload, I evaluate the impact of a reform that expanded the reporting window. Starting in October 2013, households were only required to recertify six months after enrollment, whereas before, they had to recertify every three months. I find that this reform increased the likelihood that households remain enrolled for at least six months by about 10 to 12 percentage points. The reform most increased retention among households predicted to be the least food insecure.

These findings suggest that reducing the burden or frequency of reporting requirements would increase retention and take-up. At the same time, such a reform would also allow some households who were no longer eligible to remain enrolled for additional months, and encourage more advantaged households to continue to remain in the program when they might otherwise choose not to participate. The principal contribution of this paper is to provide evidence about the scale of this trade-off.

Finally, I calculate the marginal value of public funds (MVPF) of reducing eligibility verification, using the enrollment effects from the 2013 reform. I tally the additional benefits disbursed due to the increase in retention, and use estimates of the fiscal externalities associated with these processes and SNAP receipt. I allow for these benefits and costs to vary between recipient types, in order to consider the relevance of worse targeting. I find that the MVPF for expanding the recertification window is comparable to the MVPF estimated in other studies of SNAP enrollment. Despite worse targeting, I conclude that administering fewer recertifications is an attractive policy option for increasing take-up, especially compared to costly outreach efforts, since most marginal recipients are still eligible and both participants and government benefit from reduced administrative burdens.

The paper contributes to several literatures studying enrollment dynamics in safety net programs and the administrative burdens which characterize these programs. First, I contribute to a growing literature studying the incomplete take-up of means-tested programs (Linos et al., 2020; Finkelstein and Notowidigdo, 2019; Bhargava and Manoli, 2015; Currie, 2006; Aizer, 2007;

Moffitt, 1983). Of the three commonly cited explanations for incomplete take-up – learning, compliance and stigma costs – this paper underscores the importance of compliance costs. I find that limited retention is a significant source of non-participation among eligible households, and retention is low largely due to the burdens associated with reporting requirements.¹

Second, I build on many studies investigating enrollment patterns in SNAP, in particular those studying trends in total participation, enrollment durations, and characteristics which predict program entry and exit (Blank and Ruggles, 1996; Jolliffe and Ziliak, 2008; Ganong and Liebman, 2018; Mills et al., 2014; Burstein, Patrabanish, Hamilton, and Siegel, 2009). A persistent issue plaguing this literature has been limited access to reliable, individual-level, and longitudinal enrollment data. Public survey data documenting enrollment in safety net programs is prone to misreporting (Meyer, Mok, and Sullivan, 2009; Meyer and Mittag, 2015) and rarely follows the same individuals and households over time or with sufficient frequency (Ganong and Liebman, 2018; Leftin et al., 2014). Most studies investigating the effect of policies and practices on enrollment and take-up evaluate changes in aggregate flows into and out of enrollment (Kabbani and Wilde, 2003; Ganong and Liebman, 2018; Heflin and Mueser, 2010; Schwabish, 2012; Shiferaw, 2019). These studies generally do not measure actual enrollment durations, assess the importance of changes in retention, or how take-up and enrollment patterns vary across different populations.²

A subset of this literature considers the importance of reporting requirements on enrollment and retention. Using aggregate enrollment data and variation in state policy, Klerman and Danielson (2011), Currie, Grogger, Burtless, and Schoeni (2001), Kabbani and Wilde (2003), McKernan, Ratcliffe, and Gibbs (2003), and Hanratty (2006) all show that shorter reporting periods are associated with lower program enrollment. A handful of papers use state- or county-level micro-data to document how recertification policies and practices affect retention (Staveley, Stevens, and Wilde, 2002; Ribar, Edelhoch, and Liu, 2008; Ribar and Swann, 2014; Hastings and Shapiro, 2018; Gray, 2019; Homonoff and Somerville, 2019).

Like these authors, I find that reporting requirements lower program retention. This paper adds to and diverges from other papers' findings in several key respects. By linking administrative data on program enrollment and quarterly earnings, I can identify the likely eligibility status of households who exit SNAP. Similar to Gray (2019), I estimate that a majority of households who exit are income eligible; I show that this finding is robust to using several definitions of eligibility. I also show that enrollment spells are shorter and retention is lower in California than those documented elsewhere, and that earnings play a significant role in explaining households'

¹Interactions with government during reporting months might make stigma costs more salient, which could drive exits during these months. At the same time, one could then just as easily consider this experience of stigma as a form of compliance cost fostered by an administrative burden.

²There are a few notable exceptions, including Mills et al. (2014), who use the SIPP and state program data to document the costs of program "churn", Leftin et al. (2014), who also use the SIPP to document a number of facts about SNAP enrollment patterns, and Klerman and Danielson (2011), who use the USDA SNAP Quality Control files to study how composition of SNAP caseloads change during large increase in enrollment surrounding the Great Recession. Neither the SIPP nor the SNAP QC files allow researchers to observe enrollment spells as long as those represented in the MEDS data that I use.

likelihood of exiting the program in reporting months. I also present the broadest evidence to date about these processes' effects on targeting and caseload composition.

Third, this paper contributes to an ongoing debate about the merits and effects of administrative burdens (Herd and Moynihan, 2019; Kleven and Kopczuk, 2011; Currie, 2006). Early models of the optimal design of safety net programs proposed constructing significant barriers to enrollment (Akerlof, 1978; Nichols, Smolensky, and Tideman, 1971; Nichols and Zeckhauser, 1982; Moffitt, 1983; Besley and Coate, 1992), motivated by the assumption that the deterrent effect of administrative "hassles" can facilitate more efficient redistribution to the most vulnerable households. This result assumes that hassles screen out those less willing to spend the time required to apply or remain enrolled. In this way, hassles are able to elicit the opportunity cost of potential enrollees' time and reveal their otherwise unobservable need for assistance. Alternative models propose that hassles screen out those less able to navigate these ordeals, thereby deterring exactly the individuals policymakers most want to help (Bertrand, Mullainathan, and Shafir, 2004; Mani, Mullainathan, Shafir, and Zhao, 2013; Mullainathan and Shafir, 2013). Empirical evidence supporting either explanation remains limited (Currie, 2006; Alatas et al., 2012; Alatas et al., 2016; Waldinger, 2018; Deshpande and Li, 2019; Finkelstein and Notowidigdo, 2019). Indeed, the few studies cited here reach contradictory findings.

I conclude that reporting requirements serve a targeting purpose. Holding an array of other case characteristics constant, income eligible households are three times more likely to complete their reporting requirement and remain enrolled than ineligible households. There is also a strong relationship between earnings and retention; every \$500 dollars in monthly earned income corresponds to a four percentage point increase in the likelihood of leaving in a reporting month. I find a similar linear relationship between households' benefit amounts and likelihood of exit.

While earnings play a key role in predicting exit, other case characteristics that proxy for relative disadvantage appear less important. For example, an individual's race, language, and previous enrollment in TANF are all only marginally related to likelihood of exit. I use the combination of these other characteristics to relate each household to similar households in the December Current Population Survey (CPS), which asks respondents about their ability to access and afford food. Considering only demographic characteristics, SNAP households most similar to CPS households who report being food insecure are slightly more likely to recertify. When I incorporate earnings, I recover a much stronger relationship.

Fourth, I contribute to the new literature estimating the marginal value of public funds (MVPF) for expansions to public programs (Hendren and Sprung-Keyser, 2020). I provide the first estimate of the MVPF associated with increasing enrollment by widening the reporting interval, and one of the first estimates to integrate targeting effects.

The paper proceeds as follows. In [Section 2](#), I describe the administrative data. In [Section 3](#), I provide background information on program eligibility and reporting requirements. In [Section 4](#), I identify how long individuals and households remain enrolled and document how en-

rollments usually end when households have to recertify their eligibility. In [Section 5](#), I calculate the share of households who exit the program despite appearing eligible. In [Section 6](#), I document how households' earned income evolves before, during, and after enrollment. In [Section 7](#), I identify how individual and household characteristics predict likelihood of exiting SNAP in reporting and non-reporting months. In [Section 8](#), I calculate the MVPF associated with expanding the reporting interval. In [Section 9](#), I conclude.

2 Data

I use individual-level monthly enrollment data collected by the California Department of Social Services (CDSS). These data originate from California Department of Health Care Services' Medi-Cal Eligibility Data System (MEDS) files. This data system is primarily used for the administration of the state's Medicaid program (known as Medi-Cal), but it also captures monthly enrollment information in other safety net programs including CalFresh (California's instantiation of SNAP) and CalWORKs (California's Temporary Assistance for Needy Families (TANF) program). Along with enrollment indicators, these panel data contain basic demographic information about each recipient, including their date of birth, race, language, and sex. I also observe the county in which individuals are enrolled and their case number, which I use to group individuals into households. [Table 1](#) summarizes basic characteristics of enrollees for a select number of years in my sample.

I identify the start date, end date, and length of every continuous enrollment spell for all recipients between 2005 and 2020.³ To account for censoring issues, I exclude cases that were enrolled as of January 2005.

I use county identifiers and case serial number to group enrollees into common households for every enrollment month. I group these households into six household types, according to the ages of their case members: children-only,⁴ working-age adults with no children, single working-age adults with children, multiple working-age adults with children, seniors, and seniors with children. These different households are subject to different reporting requirements, and we might expect that they have different levels of need for food assistance.

I match all adults with their available quarterly wage earnings records. I observe California wage earnings in all quarters in which the individual was enrolled in SNAP, as well as the six quarters before their enrollment starts and six quarters after the enrollment ends.⁵ I sum quar-

³Other work studying similar enrollment trends "fill in" one month enrollment gaps, assuming these gaps more likely reflect data errors than actual breaks in enrollment (Burstein, 1993; Gleason, Schochet, and Moffitt, 1998; Cody et al., 2005; Cody, Castner, Mabli, Sykes, et al., 2007; Mabli et al., 2011; Ratcliffe, 2016; Gray, 2019). Leftin et al. (2014) find that these gaps could very well be instances of churn, as opposed to misreporting, but still choose to fill them in. I identify enrollment spells both ways, filling in these one-month gaps and not. I choose to use the version in which I do not fill in these gaps. I find that my measures of churn and total enrollment better reflect what the state reports when I do not fill them in.

⁴Children-only households are generally households in which adults are not eligible for SNAP due to their immigration status, but their children are.

⁵The division at the state agency responsible for administering UI and which helped to facilitate this match does

terly earnings within each case. I also match each individual to their households' SNAP benefit amount from 2010 through June 2020.⁶

The administrative data I rely on are not the official records of SNAP enrollment in the state. California is unique in that counties, as opposed to the state, administer SNAP, meaning that the official enrollment records are held by 58 separate county offices. Counties report aggregate enrollment counts, through the state, to Food and Nutrition Services (FNS) at the US Department of Agriculture. Comparing my data to FNS counts, MEDS records appear to overstate enrollment each month by nearly 100,000 individuals (or two to three percent of the official caseload) each year. This difference is partially explained by MEDS data recording participation in a state-run food assistance program.⁷

Figure 1 plots total monthly enrollment as recorded in MEDS and the FNS reports. Enrollment increased significantly in the aftermath of the Great Recession, as it did nationally (Ganong and Liebman, 2018), and enrollment fell between 2015 and 2019 as the economy recovered. It increased again in June 2019 when Supplemental Security Income (SSI) recipients in California became eligible for SNAP; total enrollment increased by 330,000 in the first three months after expansion. Enrollment spiked again in Spring 2020 amidst the COVID-19 crisis. The economic disruption wrought by the pandemic resulted in more Californians enrolling in SNAP than at any other point the program's history (4.73 million in May 2020). It also resulted in many individuals enrolling in SNAP for the first time. Of the roughly one million Californians who enrolled between March and June 2020, one-third had never been enrolled in any other month between 2005 and 2020.

Along with facilitating spell-based analyses, these panel data also allow me to count the number of unique Californians who have ever interacted with the program over the last decade and a half. The program has a much wider reach than cross-sectional counts might suggest. SNAP has assisted over 14 million unique individuals since 2005, over 13 million since 2010 and over 10 million since 2015.

3 Policy Background

3.1 Eligibility

The rules used to determine SNAP eligibility are mainly set at the federal level. Generally, a household is income eligible for SNAP if: (1) its gross income is below 130 percent of the households' federal poverty level (FPL); (2) net income (gross income minus taxes, 20 percent of earned income, a \$100 to \$200 standard deduction, and a portion of the cost of shelter, utility, medical, and care expenses) is less than 100 percent of its FPL, and (3) assets are worth less than \$2,000 to

not retain earnings records for more than seven years, which precluded me from matching earnings records to participants before 2012.

⁶California Department of Social Services does not have issuance histories for cases before 2010.

⁷The California Food Assistance Program is a state-run program for recent immigrants who are not yet eligible for SNAP. There were roughly 30,000 individuals enrolled in this program in FY 2019-2020.

\$3,500 (CBPP, 2020). States have some discretion to expand eligibility. For example, California, along with many other states, allows households with seniors, disabled persons, or a member eligible for a TANF-funded program to qualify for SNAP even if their gross income is up to 200 percent of FPL (LSNC, n.d.[a]; USDA, 2020). California also allows any households containing a member who qualifies for Medicaid to be categorically eligible for SNAP. Additionally, households with only seniors or disabled members need only meet the net income test. A small number of households in which every member is enrolled in cash assistance are exempt from both income tests.

SNAP cases are defined as a group of individuals who prepare and eat meals together. The income eligibility limits, and benefit amount credited to households based on that income, are applied according to each SNAP case's total size, regardless of the age of the members. Nearly all forms of earned and unearned income count towards these income tests, and income received by all members of a household counts towards eligibility.

In many states, households must also demonstrate that they have sufficiently low assets in order to qualify for SNAP. In California, households who qualify for SNAP under broad-based categorical eligibility are exempt from the asset test. This is a particular advantage of my study relative to other studies of this issue, since researchers rarely have access to information about household wealth. I am able to infer eligibility using only income.

Some individuals are categorically ineligible for SNAP, including: non-citizens, workers on strike, students (except in particular circumstances), and until 2019, Californians receiving Supplemental Security Income (SSI). These exemptions are generally not a concern in my setting, as I mainly consider continuing eligibility among individuals who were already deemed eligible.

3.2 Reporting Requirements

The federal government sets minimum intervals within which households must verify their eligibility. States are permitted to administer more frequent eligibility verifications. Most SNAP recipients in California are required to verify eligibility twice a year. Six months after enrolling (and every 12 months thereafter), most households need to complete a two-page semi-annual report (known as a SAR-7), on which they relist all household members, all sources of income, how that income might change over the next six months, and their expenses. Then, twelve months after initial enrollment (and every 12 months thereafter) most recipients need to complete a full recertification (known as a RRR). This recertification resembles initial enrollment in its length and complexity. In addition to completing a four-page form, households must also complete an interview in-person or over the phone with county staff. If a household fails to meet any of these requirements before the last day of the reporting month, their benefits can be cut off. Households can remain enrolled without reapplying if they submit any missing paperwork or complete their interview within 30 days of their initial reporting deadline. If they do not, and they wish to re-enroll, they must undertake a full re-application.

In between these scheduled reporting months, households must also notify their county of-

fice if their gross income ever exceeds 130 percent of its FPL, or their household composition changes such that they may no longer be eligible.

The six month cycle of semi-annual report and full recertification describes the reporting process for most households in California, but some face different timelines. For example, households with only seniors or individuals with disabilities only need to complete the semi-annual report every 12 months; if anything about their status has changed, they might also have to submit the semi-annual report in the intervening months. Households including only seniors or individuals with disabilities and who have no earned income only need to recertify every 36 months (LSNC, n.d.[b]). For now, these households must still complete a semi-annual report every 12 months, but this requirement will be eliminated starting in 2022. [Figure 2](#) illustrates the reporting schedule for these three household types.⁸

Even though when households must report and what information they need to submit is determined federally, county offices have some discretion over how these reports are administered. They can decide how and when to conduct interviews with recipients, whether and how much they remind enrollees about their reporting deadlines, and whether they use third-party information to verify what enrollees report.

The reporting requirements described above have applied to SNAP in California since October 2013. Before then, households were required to submit eligibility reports every quarter.⁹ These quarterly reports required cases to report an estimated income amount for each month in the quarter; the semi-annual report only asks for current earnings and potential future changes in earnings. Hereafter, I reform to this policy change as the 2013 reform. In the following section, I document the effects this reform had on program enrollment.

4 Enrollment Durations

[Figure 3](#) summarizes the most frequent enrollment spell lengths. Panel A includes spells that began at least two years before October 2013, when reporting requirements shifted from every three months to every six. Panel B includes spells that began after October 2013. In both, it is clear that enrollment spells are commonly in intervals that coincide with when households must verify eligibility.

⁸There are a handful of exceptions to this common schedule. For example, in six counties, starting in 2018 and 2019, working-age adults with no children must also demonstrate that they are working or looking for work at least 20 hours a week; otherwise, these individuals are limited to receiving benefits for only three months over the course of three years. The Trump Administration planned to institute these benefit limits and work requirements on so-called Able-Bodied Adults without Dependents (ABAWDS) nationwide starting in March 2020, but implementation was postponed indefinitely due to the COVID-19 pandemic.

⁹This reform was allowed by a series of regulatory changes dating back to 1999, which also permitted states to decrease not only the frequency of these reports, but also the amount of information that families had to submit (Danielson, Klerman, Andrews, and Krimm, 2011). Between 2003 and 2011, USDA FNS authorized a series of waiver requests from California to continue administering quarterly reporting, all the while urging the state to move to semi-annual reporting. State policymakers insisted the transition was complicated by legislative, political, and technological obstacles (CDSS, 2010). Finally, the California legislature passed AB 6 in 2011, directing CDSS and the counties to adopt semi-annual reporting by October 2013.

Figure 4 provides additional evidence that individuals exit SNAP in the month a report is due. I plot the share of cases that remain enrolled through each month after initial enrollment up to 24 months. Again, I consider these patterns before and after the 2013 reform. In either case, after 2013, roughly 40 percent of SNAP recipients exit by six months, and almost 65 percent exit by 12 months.

Notably, the share of individuals who exit by six months is fairly similar before and after the 2013 reform. Indeed, the share of cases that exited at three months before the reform appear to now remain enrolled up to six months. Figure 5 identifies the share of cases who exit SNAP at three, six, or twelve months after enrolling by each month since 2005. It provides additional visual evidence that the 2013 reform increased the share of cases that remain enrolled through six months and decreased the share who exited after only three.

Figure 6 summarizes differences in exit rates for each enrollment duration.¹⁰ Conditional on remaining enrolled for six months, when the first semi-annual report is due, the average household has a one-in-five chance of exiting the program in that month. The likelihood of exiting at month 12 is nearly the same. Conditional on remaining enrolled until month 18 and month 24, the probability of exiting are both approximately 10 percent.

Together, this evidence suggests that most individuals will remain enrolled in SNAP until they are required to recertify. Then, because they are no longer eligible, believe they are no longer eligible, or the costs of reporting eligibility outweigh the benefits of remaining enrolled, many exit. I distinguish between these competing explanations in the next section.

5 Measuring eligibility among leavers

CDSS infers the degree to which reporting requirements burden eligible households by tracking the share of cases who exit SNAP at their recertification but reapply to the program within one to three months. The assumption is that households who leave but quickly re-enroll were never actually ineligible, but simply failed to complete their semi-annual report or recertification on time. Counties report these “churn” rates to CDSS, and CDSS publishes them every quarter. In any given quarter, about 10 percent of cases reapply for benefits within one month after failing to complete their recertification, and 15 percent reapply within three months. These rates are fairly constant over time (Figure 7) and are similar to national figures reported by Mills et al. (2014).

I replicate and extend these tabulations using my panel data. Table 2 reports the share of individuals who exited SNAP at some point between 2014 and 2020, but returned to the program within six different timelines. From 2014 onward, 10 and 18 percent of individuals who exit

¹⁰Figure 6 summarizes per-month hazard rates. I estimate a logit regression, in which the dependent variable is indicator for exit and my independent variables are vector of dummies α , representing each enrollment period ($d = 1, \dots, D$), as well as controls for month and year ϕ , county θ , and household type η fixed effects. I cluster standard errors at the person-spell level. Estimating these hazard rates is computationally intensive, so I use a five percent sample of all spells. I restrict to cases that began after 2013 so as to focus on enrollment patterns under current reporting policy. Using the estimated coefficients from this logit, I identify the predicted probability of exit for each covariate, including each level of d . These are the estimates reported in Figure 6.

SNAP re-enroll within one and three months, respectively.¹¹ Roughly 40 percent who exit re-enroll within one year, and about half re-enroll within two years. These rates are similar to those reported by Leftin et al. (2014). [Figure 7](#) reports the shares by each individuals' exit date going back to 2005. It is clear that the 2013 reform also reduced the churn rate. Fewer eligibility verifications reduced not only the number of leavers in each month, but also the share of those leavers who would quickly re-enroll.

That nearly one-in-six individuals return to the program within three months after exiting suggests that a significant share of exits are not due to ineligibility. However, this measure potentially underestimates the share of leavers who are eligible, because it does not count eligible individuals who exit the program and never return or return after three months.

I address this concern by using the state's earnings records to measure the actual fraction of households that exit but appear income eligible. I identify each households's total earned income in the quarter and after their exit, and then count the number of exiting households whose total income is above or below their respective eligibility threshold.¹²

Determining actual eligibility for SNAP is complicated. It's an imperfect process even for the government agencies that administer the program, which have more information than I observe. My approach, which relies mainly on wage earnings, is limited in a number of ways. Below, I discuss how my having limited information about alternative sources of income, household expenses, and more could bias my estimates. To address these concerns and illustrate their relevance, I present results using several alternative definitions of eligibility.

First, eligibility for SNAP is determined monthly, but I observe only quarterly earnings. I assume that each person's monthly earned income is equal to one-third of their quarterly earnings. In order not to misassign income earned while on or off the program, I restrict this analysis to individuals who exited SNAP at the end of a calendar quarter. In one simulation, I assume that households receive all their quarterly earnings in the one month they must verify eligibility, which means I compare their quarterly earnings to their respective monthly income eligibility threshold.

Second, I do not observe all forms of earned and unearned income. EDD records only capture in-state wage earnings.¹³ I also do not observe any case's unearned income. To test the relevance of unearned income, I supplement my analysis using case records from San Francisco county as well the SNAP Quality Control files. I assign each household in the CDSS data with

¹¹This is estimate slightly below counties' reports. This discrepancy is likely due to how the Medicaid records are updated relative to the county SNAP case files. This might also help to explain why MEDS tends to overstate total enrollment.

¹²Since I am unable to match children-only households (i.e. mixed immigration status families) to their parent's earned income, I exclude these households from this analysis. I also only consider cases that exit for at least two months, meaning my estimates tend to be lower bounds on the true share of eligible leavers.

¹³EDD data captures the sum of three-months' worth of each individual's earnings from all jobs that are covered by the unemployment insurance program. Self-employment income, employment by the military and the federal government, and under-the-table wages are not covered by the state's unemployment insurance program, and so are not captured in these records. Kornfeld and Bloom (1999) conclude that UI records cover roughly 90 percent of workers and their earnings. See also (Czajka, Patnaik, and Negoita, 2018). BDT (2020) report that less than 5 percent of SNAP recipients receive self-employment income.

the average level of unearned income reported among similar households in these data. I then recalculate the share of households who appear eligible assuming that they each have this simulated level of unearned income, in addition to their actual earned income. See [Appendix B](#) for more information about this procedure.¹⁴

Third, I do not observe each household's deductible expenses, like housing, child care, and medical costs, which determine the net income test against which their income is compared. I account for this concern by estimating the share whose income is below 200 percent of FPL and 130 percent of FPL – the approximate net income thresholds assuming households' have high and low levels of deductions, respectively.

Fourth, I do not observe household composition after a household exits the program. For example, if a household loses a member after exiting, then their earnings would be applied to a different eligibility threshold. I account for this concern by identifying the share of households whose total earnings are below 130 percent of FPL even if their last-observed household size was reduced by one person.

[Figure 8](#) reports the share of cases who appear eligible under these various definitions of eligibility. I calculate these shares by counting the number of cases that leave at the end of each calendar quarter between December 2013 and December 2019,¹⁵ and among those cases, the number eligible under each definition.

That the churn rate severely underestimates the rate of unwanted exit is robust to any of these alternative definitions. The share of cases with zero earned income in the quarter following exit (around 50 percent) is three times higher than the 90-date churn rate. Over 70 percent of cases have earnings that would still qualify them for SNAP, assuming their household size remains the same, which is almost five times higher than the 90-day churn rate. Removing a household member and adding in households' average unearned income amounts barely affect the estimated eligibility rates. Assigning all quarterly earnings to just one month and using the 130 percent threshold affects matters more, but it remains the case that the majority of exiting cases appear eligible. These eligibility rates are nearly the same for every quarter over the last six years.

6 Earnings Trends

In the preceding section, I showed that most households who exit SNAP have earnings that would still qualify them for the program. In the next two sections, I investigate potential explanations for exit in a reporting month.

¹⁴Large increases in unearned income after a household exits SNAP could lead me to overstate eligibility after exit. Neither the San Francisco case records nor the Quality Control files can capture changes in unearned income after a household leaves the program. To account for this concern, I use the SIPP to track SNAP households before, during and after SNAP enrollment. I find no evidence of any significant change in unearned income around program exits. See [Appendix A](#) for this analysis.

¹⁵I limit to these cases because I have earnings data for all of these quarters and all of these quarters occur after the 2013 reform.

First, I consider whether households exit because their earnings have changed since they enrolled. Even if households are still eligible, their earnings might have recovered enough that the stigma and compliance costs of remaining enrolled exceed the value of their SNAP benefits. I identify these earnings trends relative to the start of SNAP enrollment by estimating the following equation, similar to Hastings and Shapiro (2018).

$$\text{earn}_{iym} = \gamma_l \underbrace{\Lambda_{il}}_{\text{spell length}} + \underbrace{\sum_{j=-5}^8 (q_{i,j \neq 0}) \rho_q}_{\text{quarter relative to enrollment start}} + \sum_{j=-5}^8 (\Lambda_{il} \times Q_{i,j \neq 0}) \delta_q + \underbrace{\eta_h + \phi_{ym} + \theta_c}_{\text{time, county, and household type fixed effects}} + \varepsilon_{iym} \quad (1)$$

The model identifies the average difference in earnings in each quarter q relative to the quarter before the case's enrollment spell begins. I interact the leads and lags for quarters with the indicator for spell length to identify how earnings trends vary between cases that exit soon after enrolling versus those that remain enrolled through multiple reporting periods. I account for year and month fixed effects ϕ , county fixed effects θ , and household type η . Post-estimation, I use estimates of γ , ρ , and δ to predict earnings in each quarter for each spell length and at the mean value of the other covariates.

Figure 9 plots the average predicted quarterly earnings for each quarter relative to the beginning of an enrollment spell for spell lengths of 6, 12, 18, and 24+ months. On average, patterns are the same for each spell length: earnings are fairly constant in the year before an individual enrolls in SNAP, enrollment coincides with a sharp decline in earned income, and households tend to exit the program around when their earnings have recovered. For those who exit at six months, earnings recover by the first quarter after enrollment. For those who exit at 12 months, earnings rebound to the average predicted pre-enrollment earnings by the third quarter after enrollment starts and are well above pre-enrollment earnings by the fourth quarter. The same pattern follows for those who exit at 18 or after 24 months. Earnings remain depressed in the quarters in which these individuals are still enrolled and recover only three or four quarters after enrollment starts.

These trends suggest that SNAP serves the intended purpose of an income support program, cushioning family income during periods of acute financial need, at least among those who enroll. On average, households whose earnings recovery more quickly appear more likely to exit earlier, as one might expect. However, I cannot rule out the possibility that the causality runs in the opposite direction – earnings rebound because households must replace income they lost from leaving SNAP, or households increase their earnings when they no longer face the steeper tax rate imposed by the SNAP benefit schedule. That said, households who exit at six months experience a recovery in earnings before they exit, which suggests the decision to remain flows from changes in earnings.

The main takeaway is that enrollment in and exit from SNAP coincides with important

changes in households' earned income. At the same time, I demonstrated in the previous section that a large share of households exit the program despite still being eligible. If leavers tend to still be income eligible, but exit when their earnings recover to pre-enrollment average, this suggests that many households were eligible for many months before they enrolled.

I test this implication by identifying the share of households who appear income eligible (using the 130 percent FPL threshold) in the quarters preceding, during and after their enrollment. I re-estimate Equation 1 but replace the outcome variable with an indicator for whether the case appears income eligible.¹⁶ Again, I distinguish between cases enrolled for 6, 12, 18 and more than 24 months, and I use the estimates to identify the average predicted eligibility level in each quarter relative to the start of enrollment.

Figure 10 summarizes the results. Enrollment coincides with a sharp uptick in the likelihood of eligibility, mirroring the drop in earnings illustrated in Figure 9.¹⁷ As predicted, the vast majority of households who enroll in SNAP are eligible for many months before and after their exit.

7 Who Leaves in Reporting Months?

In the following section, I identify whether participants who are no-longer eligible or less in need of food assistance are more likely to exit in reporting months. Since I do not observe individuals' latent "ability" or need for food assistance, I evaluate whether individual and household-level characteristics that typically correlate with economic and food insecurity (e.g., current earnings, past earnings, race, language status, household composition) are predictive of exit.

I estimate the marginal effects of these characteristics on program exits in reporting months using a discrete time hazard model (Kalbfleisch and Prentice, 2011; Hoynes, 2000). The model identifies the transition probability $P(d, \mathbf{Z})$, or the likelihood that a subjects exits the program in period d , conditional on remaining enrolled until period $d - 1$ and covariates \mathbf{Z} . The hazard rate is modeled as a logit probability.

$$P(d, \mathbf{Z}_{iymch}) = \frac{\exp(\alpha_d + \mathbf{Z}_{iymch}\delta)}{1 + \exp(\alpha_d + \mathbf{Z}_{iymch}\delta)} \quad (2)$$

The vector of dummy variables, α_d , captures each potential period of participation ($d = 1, \dots, D$). These dummies non-parametrically account for underlying duration patterns and identify the baseline hazard. Additional covariates, \mathbf{Z} , include a series of fixed effects as well as demographic and household characteristics.

¹⁶I define a case as eligible if their quarterly earned income is below 130% of the FPL for their household size. I use the household composition as of when their enrollment begins.

¹⁷This share might not reach 100 percent for at least two reasons: (1) many households will qualify for SNAP even if their income exceeds 130 percent FPL, because they can deduct the cost of expenses; and (2) the verification process is imperfect, and a small share of households who have incomes above the eligibility threshold for some month during the quarter will be able to remain enrolled.

$$Z_{iymch} = \mathbf{X}'_i\beta + \mathbf{X}'_i \times (\text{Recert}_{id})\gamma + \phi_{ym} + \theta_c + \eta_h \quad (3)$$

The fixed effects include calendar year and month ϕ_{ym} , which vary within each individual's enrollment spell, county effects θ_c , which tend not to vary within spells, and household type η_h , which also tends not to vary within spells.

I estimate this model separately for different sets of characteristics, \mathbf{X} , including: demographic characteristics (race, preferred language, household type, and previous enrollment in TANF), an indicator for eligibility, and levels of earnings or benefit amounts. Demographic characteristics are constant throughout all individuals' spells and increase or lower baseline hazards for all enrollment spell lengths, while earnings and benefit levels can change each month.

Finally, I identify whether effect of those characteristics vary between reporting and non-reporting months by interacting the relevant characteristic with an indicator for whether the period d is a month in which the case would have to complete a semi-annual report or a recertification.

The key parameters in the logit model are β and γ – these capture the separate effects that characteristics have on likelihood of exit in reporting and non-reporting months.

I restrict this analysis to spells that start after December 2013 to avoid confusing effects between two reporting systems and to ensure I have earnings data for all months enrolled. Since this analysis is highly computationally intensive, I also rely on a five percent random sample of all individual spells. Individuals may enroll in SNAP multiple times over the five year period; I treat these spells as independent. I cluster standard errors at the individual-spell level.

After estimating [Equation 2](#), I transform the estimated log odds to the predicted average or marginal effect of each characteristic on the likelihood of exit in reporting and non-reporting months. [Table 3](#) and [Figure 11](#) to [Figure 14](#) summarize these effects across each model.

[Table 3](#) reports the average likelihood of exit in reporting and non-reporting months by imputed eligibility status. Both eligible and ineligible households are roughly six times more likely to exit in reporting months (11 compared to 2 percent and 32 compared to 5 percent, respectively).¹⁸

[Figure 11](#) summarizes the effect of earned income and benefit amounts received at time d on likelihood of exit. There is little to no effect of benefit levels on exit in non-reporting months, but there is a clear effect in months when households must verify eligibility. Every \$50 in additional benefits is associated with 3 to 5 percent point decrease in the likelihood of exit, up to about \$400 in benefit levels at which point the effect plateaus. There is also a clear relationship between earnings and likelihood of exit, especially in reporting months. Every \$500 is associated with a 3 to 5 percentage point increase in the likelihood of exit. Relative to households with zero earned income, households with more than \$5,000 in estimated monthly earnings are 42 percentage points more likelihood to exit. There is also a relationship between earnings and exit in non-

¹⁸That just one-in-three ineligible households exit SNAP in a reporting month might reflect both Type 1 errors or my imperfect measure of eligibility.

reporting months, which reflects the fact that households can leave the program in between reporting periods if their income increases enough that they become ineligible.

The associations summarized in [Figure 11](#) are not necessarily evidence of targeting effects. Present earnings might not reflect households' latent need for SNAP, and the association between present earnings and likelihood of exit might capture a mechanical effect of an eligibility verification. I explore these processes' screening effects by testing whether likelihood of exit varies with other indicators of households' need for food assistance. [Figure 12](#) summarizes the relationship between likelihood of exit and earnings twelve months before one's SNAP enrollment starts. Again, I document a relationship between these earnings and likelihood of exit in a reporting month, but this effect is more muted. For every \$500 increased earnings, the likelihood of exit increases by just one percentage point. Households with monthly earnings of more than \$5,000 a year before enrolling are 10 percentage points more likely to exit in a reporting month than households with no earnings a year before enrolling. Comparing this result with those from [Figure 11](#), eligibility verifications appear to lower retention among households with higher current income, as one might expect. This effect is still present, but not as large, when using previous earnings.

The relationship between demographic characteristics and exit in reporting months is even less clear. There is no relationship between any individual demographic characteristic and likelihood of exit in non-reporting months ([Figure 13](#), Panel A). In reporting months, I observe some limited variation (Panel B). Black recipients are slightly less likely to exit relative to white enrollees, but effects for other groups relative to white recipients are insignificant. Individuals who were enrolled in TANF before their current enrollment in SNAP started are also slightly more likely to remain enrolled. Non-English speakers appear just as likely to exit as English speakers. Seniors and households with children are clearly less likely to exit than single adults without children.

It is not obvious how these characteristics correspond with actual need for food assistance. Indeed, there might be important interactive effects between one's race, household composition, language status and earnings in predicting economic insecurity. Next, I identify how combinations of demographic and household characteristics are associated with food insecurity and relate this imputed measure of need for food assistance to likelihood of exit.

I use the December Current Population Survey (CPS) from 2010 to 2018, which asks respondents about their ability to access and afford food. I identify how respondent demographics and household characteristics relate to this reported food insecurity.¹⁹ I assign each SNAP recipient the predicted level of food insecurity estimated for their counterpart in the CPS, and run a version of [Equation 2](#) in which the vector of characteristics X is the binned values of predicted

¹⁹Specifically, I estimate a logit model of respondents' reported food insecurity on binned values of their age, race, number of children, presence of other adults, state, survey year, and earnings. I then use the estimated coefficients to predict each respondent's likelihood of being food insecure, resulting in a measure of predicted food insecurity for every observation that ranges from zero to one. For all possible combinations of these characteristics, I then identify the average predicted level of food insecurity for all combinations of characteristics included in the prediction exercise. See Appendix Section 1 for more information about this procedure.

likelihood of food insecurity. As above, I use the coefficients estimated in this regression to identify the marginal percentage point effect of the imputed levels of food insecurity on likelihood of exit.

Figure 14 summarizes the results from this analysis. When I rely only on demographic characteristics and ignore earnings, I find a limited relationship between food insecurity and likelihood of recertifying. Households that are most likely to be food insecure are just 10 percentage points more likely to recertify than households with the lowest food insecurity level. The latter have about an 19 percent chance of exiting at a recertification, while the former have about a 9 percent chance. When I control for earnings, I find a clearer relationship between predicted food insecurity and likelihood of exit. Households with the highest level of food insecurity are about 39 percentage points more likely to recertify than households with the lowest level; the latter households have nearly a 1-in-2 chance of exiting in a recertification month, while the former exit only 5 percent of the time. In both versions, there is almost no relationship between imputed food insecurity and likelihood of exit in non-recertification months.

Finally, I evaluate whether the 2013 reform increased retention differently between households with higher or lower levels of imputed food insecurity. I compare cases exposed to the reform (those who enrolled in SNAP between August 2013 and December 2013) to those who were not (those who enrolled in SNAP between February and July 2013). The latter cases would have had to submit a quarterly report before October 2013, while the former would only have to submit the new semi-annual report.

To evaluate the effect of the reform, I compare the survival rates between these two groups of cases. Figure 15 summarizes the results of this analysis. Panel A illustrates how the reform decreased exit rates at three months and increased the likelihood that households remain enrolled for up to six months. On average, treated cases were 11 percentage points more likely to remain enrolled up to six months. Panel B illustrates how this effect differs between cases assigned high and low predicted food insecurity.²⁰ The effect was largest for households with the lowest level of food insecurity, since these were the households most likely to exit by six months before the reform. High food insecurity cases also exhibit increased retention, and the difference in the effect between the two types of cases is fairly modest (1 to 2 percentage points). However, the difference in longer-term retention is larger. Among high food insecurity cases, treated cases are just as likely to remain continuously enrolled for 12+ months. The treated, low food insecurity cases are 5 percentage points more likely to remain enrolled past 12 months. Reducing by half the total number of recertifications a household expects they would have to complete as long as they are enrolled induces more marginal cases to remain continuously enrolled for longer.

²⁰"High" food insecurity cases are those whose predicted food insecurity value is greater than .25.

8 Welfare Effects

I conclude with a stylized calculation of the marginal value of public funds (MVPF) of eliminating reporting requirements (Hendren and Sprung-Keyser, 2020). I estimate the MVPF for the elimination of the quarterly report, studied in the previous section.

The common formula for MVPF is given by:

$$\text{MVPF} = \frac{\text{WTP}}{\text{Net Cost}} = \frac{\text{WTP}}{B + C + \text{FE}}$$

The marginal value of public funds for a public program is the ratio of the recipient's willingness to pay for the benefits of that program and the net public cost of administering the program. In this setting, the numerator represents participants' willingness to pay to eliminate the reporting requirement, plus the personal costs required to complete the recertification. The denominator represents the total cost to government of eliminating the reporting requirement, including additional benefits disbursed, direct administrative costs saved, and participants' behavioral responses. Both numerator and denominator are calculated over the set of participants who would remain enrolled because the reporting requirement was eliminated.

I account for the reform's effects on targeting, I distinguish between benefits and costs associated with retention that vary over recipient type. I borrow the following framework from Finkelstein and Notowidigdo (2019). Suppose there are two types of participants $j \in \{L, H\}$ with latent wage θ_j where $\theta_H > \theta_L$. The following variation of the MVPF formula identifies the net benefits and costs of this reform across these two recipient types.

$$\text{MVPF}_{\text{reform}} = \frac{(\bar{B}_L + C_L) \frac{dE_L}{dR} + (\bar{B}_H + C_H) \frac{dE_H}{dR}}{(\bar{B}_L + \kappa_L - C_g) \frac{dE_L}{dR} + (\bar{B}_H + \kappa_H - C_g) \frac{dE_H}{dR}}$$

In the numerator, I identify the additional benefits delivered to each recipient type, scaled by the change in that type's enrollment induced by the reform.²¹ \bar{B}_j indexes the average monthly benefit received by type j . C_j indexes the private cost of completing an eligibility report for type j . $\frac{dE_j}{dR}$ is the change in enrollment for type j induced by the reform, which is the product of type j 's change in retention and the fraction of type j in the population. In the denominator, I identify the net cost to government of type j 's increased enrollment. C_g is the public cost of administering an additional eligibility verification. κ_j indexes the net fiscal externality associated with SNAP receipt for type j . Typically, the relevant cost is the income tax revenue lost due to labor supply responses to SNAP enrollment.

With this framework, I identify the net benefits and costs associated with the 2013 reform.

²¹The numerator is typically equal to the total benefits received by the marginal recipient, since behavioral responses to the reform are assumed to have no impact on utility, according to the envelope theorem. However, if recipients value a dollar of SNAP benefits less than a dollar in income, then this numerator is overstated. Hoynes and Schanzenbach (2009) conclude that recipients spend SNAP benefits as if they're cash, but Hastings and Shapiro (2018) and Whitmore (2002) find that recipients value a dollar from SNAP at only \$0.50 and \$0.80, respectively. Hendren and Sprung-Keyser (2020) use a WTP for SNAP of \$.69 for every dollar in benefits.

I use imputed food insecurity levels to represent the two types of recipients. Since the reporting reform changed the likelihood that recipients remain enrolled beyond the month that the report was due, I modify the framework above to sum the benefits and costs associated with all the additional months of enrollment the reform induces, allowing retention effects to vary each month over recipient type. For simplicity, I consider the reform's effects on each type's retention from four to six months after enrollment, but one could easily extend this calculation beyond six months.

$$\text{MVPF}_{\text{reform}} = \frac{\sum_j \left(\left[\sum_m \bar{B}_{jm} \frac{dE_{jm}}{dR} \right] + C_j \frac{dE_j}{dR} \right)}{\sum_j \left(\left[\sum_m (\bar{B}_{jm} + \kappa_{jm}) \frac{dE_{jm}}{dR} \right] - C_g \frac{dE_j}{dR} \right)}$$

In the numerator, \bar{B}_j is now the sum of benefits paid out in months 4 through 6, scaled by the increased enrollment of type j in each of those months, $\frac{dE_{jm}}{dR}$. In the denominator, there is the same summation of \bar{B}_j , as well as the net fiscal externality associated with benefit receipt in each of those months. The personal and public savings from not having to administer the quarterly report are outside the monthly summations, since they are only realized once.

In 2013, $\bar{B}_L \sim \$264$ and $\bar{B}_H \sim \$477$. I multiply these benefits by the increased enrollment in each month for each type. The change in retention for each type j in each month is summarized in Panel B of [Figure 15](#).

I impute C_j , the time cost to the recipient of completing the quarterly report.²² Assuming that the report takes two hours to complete,²³ and, following Finkelstein and Notowidigdo (2019), the opportunity cost for recipients of that time is twice the national minimum wage, the average personal cost of completing a quarterly report is roughly \$30. I assume the public cost of administering a quarterly report is roughly \$80, and the cost of reviewing a submission is the same for each type.²⁴

Identifying the tax revenue consequences to SNAP receipt is more complicated. I follow Hendren and Sprung-Keyser (2020)'s calculation of the net fiscal cost associated with the introduction of SNAP, in which they distinguish this effect between adult recipients (due to their labor supply reductions) and children (due to their increase in lifetime earnings). For adults, Hendren and Sprung-Keyser (2020) report a fiscal externality $\kappa_a = \$0.16$ for every \$1 in SNAP receipt, identified from the labor supply response estimated in Hoynes and Schanzenbach (2012). For young children, they report a fiscal externality $\kappa_c = -.11$ for every \$1 in SNAP benefits, identified from the long-term earnings effects estimated in Bailey, Hoynes, Rossin-Slater, and Walker (2020). Following Finkelstein and Notowidigdo (2019), I assume that SNAP receipt among seniors imposes no indirect revenue consequences. I multiply the share of enrollees of each type j that are adults, children, and seniors by these fiscal externalities reported above and by the the

²²This term is positive because the recipient places positive value on the time required to complete a report.

²³As a benchmark, Isaacs (2008) finds that it takes recipients about five hours to complete an initial application.

²⁴Mills et al. (2014) reports that the average administrative cost of program churn across six states is \$80. Isaacs (2008) estimates that the annual administrative cost associated with SNAP enrollment, including all reporting costs, is about \$178 per recipient.

average benefit, \bar{B}_j .²⁵

$$\begin{aligned}
\kappa_L &= \bar{B}_L(\pi_{La}\kappa_a + \pi_{Lc}\kappa_c + \pi_{Ls}\kappa_s) & \kappa_H &= \bar{B}_L(\pi_{Ha}\kappa_a + \pi_{Hc}\kappa_c + \pi_{Hs}\kappa_s) \\
&= \$466(.69(.16) + .30(-.11) + .01(0)) & &= \$266(.56(.16) + .43(-.11) + .01(0)) \\
&= 36.06 & &= 11.25
\end{aligned}$$

With estimates for each term, I can calculate an overall MVPF for this reform:

$$\text{MVPF}_{\text{reform}} = \frac{(\$466)(.2) + \$30(.13) + (\$264)(.31)}{(\$466 + \$36.06)(.2) + (\$264 + \$11.25)(.31) - \$80(.13)} = .94$$

The MVPF associated with this reform is .94. More liberal choices regarding the cost of completing and administering these verifications, and a more conservative estimate of the labor supply response would push this estimate closer to, or above, 1. SNAP receipt has also been shown to improve short- and long-term health outcomes, increase life expectancy, reduce criminal recidivism, and decrease use of other public programs. Including these externalities in the denominator would also push my estimate closer to 1. At the same time, if recipients value SNAP benefits at only half their cost, my estimate may be overstated by 50 percent.

Hendren and Sprung-Keyser (2020) (See Table II) report estimates of MVPF for SNAP from two program expansions: Finkelstein and Notowidigdo (2019)'s randomized outreach effort, and the program's initial quasi-random rollout. Aggregating estimates of direct and indirect effects from multiples studies of SNAP, the authors conclude that the MVPF for increasing take-up of SNAP among seniors is between .89 and .92, and the MVPF for the program's initial introduction was 1.04.²⁶ Gray et al. (2020) estimate an MVPF of between 1 and 1.32 for eliminating ABAWD work requirements.

The MVPF for this reform is comparable to these other estimates, which suggests that widening the reporting interval may be an efficient way to expand SNAP and increase take-up, despite worse targeting. In part, this type expansion is attractive from a MVPF perspective because it involves eliminating costly requirements for both recipients and government. This is in contrast to outreach efforts that can be expensive to administer. Unless particular outreach efforts are shown to be highly cost-efficient and effective at eliciting applications among the most disad-

²⁵Since the labor supply effects are constant across type and benefits decline with net income, I conclude the fiscal externality is higher for type L which means a decrease in targeting increases social welfare. As Finkelstein and Notowidigdo (2019) point out, this violates the standard intuition that delivering more assistance to individuals with greater need and higher marginal utility of consumption should increase social welfare. Estimates of labor supply response to SNAP benefits that vary with income or characteristics of ability would improve the accuracy of estimates of MVPF and might yield results more in line with the standard intuition. Incorporating welfare weights into calculations of MVPF would also change the welfare consequences of targeting. Note that by allowing fiscal externalities to vary over adults and children, and because food insecurity is higher for households with more children, my estimate becomes more in line with the standard intuition.

²⁶Bailey, Hoynes, Rossin-Slater, and Walker (2020) report their own estimate of SNAP's introduction, which is 56. The significant difference is due to how the authors value the expected difference in life expectancies due to SNAP receipt.

vantaged non-participants, lowering administrative burdens and increasing retention may be a more attractive policy option to increase take-up.

9 Conclusion

This paper provides new evidence that administrative burdens lower participation in SNAP. Using enrollment data for 14 million unique individuals over 15 years from the country's largest food stamps program, I show that SNAP exits are concentrated in recertification months and lengthening the period in between when households must verify eligibility increases retention. I also show that Type 2 errors are widespread. By almost any measure, most households who exit in these months are eligible before and after they leave. For every one ineligible household induced to leave in a reporting month, two eligible households also leave.

At the same time, recertifications do appear to lower Type 1 errors. Recertifications lessen participation at higher rates for no-longer eligible participants and households with higher earnings, as intended. Other measures of disadvantage, including earnings from one year before enrollment and characteristics predictive of food insecurity, are predictive of whether a household will remain enrolled through a reporting month.

Whether these screening effects justify lower take-up depends on the net costs of redistribution and administering these procedures (Kleven and Kopczuk, 2011; Hendren and Sprung-Keyser, 2020). Relying on others' estimates of those costs and benefits, I present suggestive evidence that limiting screening can efficiently improve take-up.

This paper does not address whether alternative procedures can more efficiently screen for eligibility. Recent work (Gray, 2019; Homonoff and Somerville, 2019) suggest that county practices and simpler procedures can improve retention. Policymakers might consider limiting the information and documentation required in these reports, and how state administrative data could be used to screen out no longer eligible households, instead of soliciting this information from recipients themselves. Measuring the impact of these procedures and comparing their effects to even longer reporting intervals is an important avenue for future work.

References

- Aizer, Anna (2007). "Public health insurance, program take-up, and child health". *The Review of Economics and Statistics* 89.3, pp. 400–415.
- Akerlof, George A (1978). "The economics of "tagging" as applied to the optimal income tax, welfare programs, and manpower planning". *American Economic Review* 68.1, pp. 8–19.
- Alatas, Vivi, Abhijit Banerjee, Rema Hanna, Benjamin A Olken, and Julia Tobias (2012). "Targeting the poor: Evidence from a field experiment in Indonesia". *American Economic Review* 102.4, pp. 1206–40.
- Alatas, Vivi, Ririn Purnamasari, Matthew Wai-Poi, Abhijit Banerjee, Benjamin A Olken, and Rema Hanna (2016). "Self-targeting: Evidence from a field experiment in Indonesia". *Journal of Political Economy* 124.2, pp. 371–427.
- Almond, Douglas, Hilary W Hoynes, and Diane Whitmore Schanzenbach (2011). "Inside the war on poverty: The impact of food stamps on birth outcomes". *Review of Economics and Statistics* 93.2, pp. 387–403.
- Bailey, Martha J, Hilary W Hoynes, Maya Rossin-Slater, and Reed Walker (2020). *Is the social safety net a long-term investment? Large-scale evidence from the food stamps program*. National Bureau of Economic Research.
- BDT (2020). *Streamlining SNAP for the Gig Economy: Simplified Self-Employment Deductions*. <https://bdtrust.org/streamlining-snap-gig-economy.pdf>. Accessed: 2020-11-30.
- Bertrand, Marianne, Sendhil Mullainathan, and Eldar Shafir (2004). "A behavioral-economics view of poverty". *American Economic Review* 94.2, pp. 419–423.
- Besley, Timothy and Stephen Coate (1992). "Workfare versus welfare: Incentive arguments for work requirements in poverty-alleviation programs". *American Economic Review* 82.1, pp. 249–261.
- Bhargava, Saurabh and Dayanand Manoli (2015). "Psychological frictions and the incomplete take-up of social benefits: Evidence from an IRS field experiment". *American Economic Review* 105.11, pp. 3489–3529.
- Blank, Rebecca M and Patricia Ruggles (1996). "When do women use aid to families with dependent children and food stamps?" *Journal of Human Resources* 31.1, pp. 57–89.
- Bronchetti, Erin T, Garret Christensen, and Hilary W Hoynes (2019). "Local food prices, SNAP purchasing power, and child health". *Journal of Health Economics* 68, p. 102231.
- Burstein, Nancy R (1993). "Dynamics of the Food Stamp Program as Reported in the Survey of Income and Program Participation". *Current perspectives of food stamp participation (USA)*.
- Burstein, Nancy R, Satyendra Patrabansh, William L Hamilton, and Sarah Y Siegel (2009). "Understanding the determinants of Supplemental Nutrition Assistance Program participation: Final report". *Alexandria (VA): Food and Nutrition Service*.

- CBPP (2020). *A Quick Guide to SNAP Eligibility and Benefits*. <https://www.cbpp.org/research/food-assistance/a-quick-guide-to-snap-eligibility-and-benefits/>. Accessed: 2020-11-1.
- CDSS (2010). *SAR Implementation Plan for USDA*. <https://nourishca.org/CalFresh/ExternalPublications/CDSS-SARImplementationPlanforUSDA-Feb2010.pdf>. Accessed: 2020-11-30.
- Cody, Scott, Laura Castner, James Mabli, Julie Sykes, et al. (2007). *Dynamics of Food Stamp Program Participation, 2001-2003*. Tech. rep. Mathematica Policy Research.
- Cody, Scott, Phil Gleason, Bruce Schechter, Miki Satake, and Julie Sykes (2005). *Food Stamp Program entry and exit: An analysis of participation trends in the 1990s*. Tech. rep.
- Cunninggham, Karen et al. (2018). *Trends in Supplemental Nutrition Assistance Program participation rates: fiscal year 2010 to fiscal year 2016*. Tech. rep. Mathematica Policy Research.
- Currie, Janet (2006). "The take-up of social benefits". *Poverty, the Distribution of Income, and Public Policy*. Ed. by David Card Alan Auerbach and John Quigley. Russell Sage, pp. 80–148.
- Currie, Janet, Jeffrey Grogger, Gary Burtless, and Robert F Schoeni (2001). "Explaining recent declines in food stamp program participation [with comments]". *Brookings-Wharton Papers on Urban Affairs*, pp. 203–244.
- Czajka, John L, Ankita Patnaik, and Marian Negoita (2018). *Data on Earnings: A Review of Resources for Research*.
- Danielson, Caroline, Jacob Alex Klerman, Margaret Andrews, and Daniel Krimm (2011). "Asset and reporting policies in the Supplemental Nutrition Assistance Program". *Journal of Economic and Social Measurement* 36.4, pp. 289–320.
- Deshpande, Manasi and Yue Li (2019). "Who is screened out? application costs and the targeting of disability programs". *American Economic Journal: Economic Policy* 11.4, pp. 213–48.
- East, Chloe N (2020). "The Effect of Food Stamps on Children's Health Evidence from Immigrants' Changing Eligibility". *Journal of Human Resources* 55.2, pp. 387–427.
- Finkelstein, Amy and Matthew J Notowidigdo (2019). "Take-up and targeting: Experimental evidence from SNAP". *The Quarterly Journal of Economics* 134.3, pp. 1505–1556.
- Ganong, Peter and Jeffrey B Liebman (2018). "The decline, rebound, and further rise in SNAP enrollment: Disentangling business cycle fluctuations and policy changes". *American Economic Journal: Economic Policy* 10.4, pp. 153–76.
- Gleason, Phil, Peter Schochet, and Robert Moffitt (1998). "Dynamics of food stamp program participation in the early 1990s".
- Gray, Colin (2019). "Leaving benefits on the table: Evidence from SNAP". *Journal of Public Economics* 179, pp. 1040–54.
- Gray, Colin, Adam Leive, Elena Prager, Kelsey Pukelis, and Mary Zaki (2020). "Employed in a SNAP? The Impact of Work Requirements on Program Participation and Labor Supply".
- Gregory, Christian A and Partha Deb (2015). "Does SNAP improve your health?" *Food Policy* 50, pp. 11–19.

- Hanratty, Maria J (2006). "Has the food stamp program become more accessible? Impacts of recent changes in reporting requirements and asset eligibility limits". *Journal of Policy Analysis and Management: The Journal of the Association for Public Policy Analysis and Management* 25.3, pp. 603–621.
- Hastings, Justine and Jesse M Shapiro (2018). "How are SNAP benefits spent? Evidence from a retail panel". *American Economic Review* 108.12, pp. 3493–3540.
- Heflin, Colleen and Peter Mueser (2010). "Assessing the impact of a modernized application process on Florida's Food Stamp caseload". *UKCPR Discussion Paper Series*.
- Hendren, Nathaniel and Ben Sprung-Keyser (2020). "A unified welfare analysis of government policies". *The Quarterly Journal of Economics* 135.3, pp. 1209–1318.
- Herd, Pamela and Donald P Moynihan (2019). *Administrative burden: Policymaking by other means*. Russell Sage Foundation.
- Homonoff, Tatiana and Jason Somerville (2019). *Program Recertification Costs: Evidence from SNAP*. National Bureau of Economic Research.
- Hoynes, Hilary W and Diane Whitmore Schanzenbach (2009). "Consumption responses to in-kind transfers: Evidence from the introduction of the food stamp program". *American Economic Journal: Applied Economics* 1.4, pp. 109–39.
- Hoynes, Hilary Williamson (2000). "Local labor markets and welfare spells: Do demand conditions matter?" *Review of Economics and Statistics* 82.3, pp. 351–368.
- Hoynes, Hilary Williamson and Diane Whitmore Schanzenbach (2012). "Work incentives and the food stamp program". *Journal of Public Economics* 96.1-2, pp. 151–162.
- Hoynes, Hilary, Diane Whitmore Schanzenbach, and Douglas Almond (2016). "Long-run impacts of childhood access to the safety net". *American Economic Review* 106.4, pp. 903–34.
- Isaacs, Julia (2008). "The costs of benefit delivery in the food stamp program". *US Department of Agriculture, March*.
- Jolliffe, Dean and James Patrick Ziliak (2008). *Income volatility and food assistance in the United States*. WE Upjohn Institute.
- Kabbani, Nader S and Parke E Wilde (2003). "Short recertification periods in the US Food Stamp Program". *Journal of Human Resources*, pp. 1112–1138.
- Kalbfleisch, John D and Ross L Prentice (2011). *The statistical analysis of failure time data*. Vol. 360. John Wiley & Sons.
- Klerman, Jacob Alex and Caroline Danielson (2011). "The transformation of the Supplemental Nutrition Assistance Program". *Journal of Policy Analysis and Management* 30.4, pp. 863–888.
- Kleven, Henrik Jacobsen and Wojciech Kopczuk (2011). "Transfer program complexity and the take-up of social benefits". *American Economic Journal: Economic Policy* 3.1, pp. 54–90.
- Kornfeld, Robert and Howard S Bloom (1999). "Measuring program impacts on earnings and employment: Do unemployment insurance wage reports from employers agree with surveys of individuals?" *Journal of Labor Economics* 17.1, pp. 168–197.

- Leftin, Joshua, Nancy Wemmerus, James Mabli, Thomas Godfrey, Stephen Tordella, et al. (2014). *Dynamics of Supplemental Nutrition Assistance Program (SNAP) Participation from 2008 to 2012*. Tech. rep. Mathematica Policy Research.
- Linos, Elizabeth, Allen Prohofsky, Aparna Ramesh, Jesse Rothstein, and Matt Unrath (2020). *Can Nudges Increase Take-up of the Earned Income Tax Credit?: Evidence from Multiple Field Experiments*. National Bureau of Economic Research.
- LSNC (n.d.[a]). *Categorical eligibility in the CalFresh program*. <http://calfresh.guide/categorical-eligibility-in-the-calfresh-program/>. Accessed: 2020-11-1.
- (n.d.[b]). *How to keep getting CalFresh benefits (certification periods)*. <http://calfresh.guide/how-to-keep-getting-calfresh-benefits-certification-periods/>. Accessed: 2020-11-01.
- Mabli, James and Jim Ohls (2015). “Supplemental Nutrition Assistance Program participation is associated with an increase in household food security in a national evaluation”. *The Journal of nutrition* 145.2, pp. 344–351.
- Mabli, James, Stephen Tordella, Laura Castner, Thomas Godfrey, Priscilla Foran, et al. (2011). *Dynamics of Supplemental Nutrition Assistance Program participation in the mid-2000s*. Tech. rep. Mathematica Policy Research.
- Mani, Anandi, Sendhil Mullainathan, Eldar Shafir, and Jiaying Zhao (2013). “Poverty impedes cognitive function”. *Science* 341.6149, pp. 976–980.
- McKernan, Signe-Mary, Caroline Ratcliffe, and Robert Gibbs (2003). “Employment factors influencing Food Stamp Program participation: Final report”. Washington, DC: Urban Institute.
- Meyer, Bruce D and Nikolas Mittag (2015). *Using Linked Survey and Administrative Data to Better Measure Income*.
- Meyer, Bruce D, Wallace KC Mok, and James X Sullivan (2009). *The under-reporting of transfers in household surveys: its nature and consequences*. National Bureau of Economic Research.
- Mills, Gregory, Tracy Vericker, Kye Lippold, Laura Wheaton, and Sam Elkin (2014). *Understanding the rates, causes, and costs of churning in the Supplemental Nutrition Assistance Program*. Tech. rep. United States Department of Agriculture, Food and Nutrition Service.
- Moffitt, Robert (1983). “An economic model of welfare stigma”. *American Economic Review* 73.5, pp. 1023–1035.
- Morrissey, Taryn W and Daniel P Miller (2020). “Supplemental Nutrition Assistance Program Participation Improves Children’s Health Care Use: An Analysis of the American Recovery and Reinvestment Act’s Natural Experiment”. *Academic pediatrics* 20.6, pp. 863–870.
- Mullainathan, Sendhil and Eldar Shafir (2013). *Scarcity: Why having too little means so much*. Macmillan.
- Nichols, Albert L and Richard J Zeckhauser (1982). “Targeting transfers through restrictions on recipients”. *American Economic Review* 72.2, pp. 372–377.
- Nichols, Donald, Eugene Smolensky, and T Nicolaus Tideman (1971). “Discrimination by waiting time in merit goods”. *American Economic Review* 61.3, pp. 312–323.

- Oddo, Vanessa M and James Mabli (2015). "Association of participation in the Supplemental Nutrition Assistance Program and psychological distress". *American Journal of Public Health* 105.6, e30–e35.
- Ratcliffe, Caroline (2016). *Asset Limits, SNAP Participation and Financial Stability*. United States Department of Agriculture.
- Ratcliffe, Caroline, Signe-Mary McKernan, and Sisi Zhang (2011). "How much does the Supplemental Nutrition Assistance Program reduce food insecurity?" *American journal of agricultural economics* 93.4, pp. 1082–1098.
- Ribar, David C, Marilyn Edelhoich, and Qiduan Liu (2008). "Watching the Clocks The Role of Food Stamp Recertification and TANF Time Limits in Caseload Dynamics". *Journal of Human Resources* 43.1, pp. 208–238.
- Ribar, David and Christopher A Swann (2014). "If at first you don't succeed: applying for and staying on the Supplemental Nutrition Assistance Program". *Applied Economics* 46.27, pp. 3339–3350.
- Schwabish, Jonathan A (2012). "Downloading benefits: The impact of online food stamp applications on participation".
- Shiferaw, Leah (2019). "Food Assistance Take-Up and Infant Health: Evidence from the Adoption of EBT".
- Staveley, Jane, David Walter Stevens, and Parke Wilde (2002). *The dynamics of food stamp program entry and exit in Maryland*. Jacob France Institute, University of Baltimore.
- Tuttle, Cody (2019). "Snapping back: Food stamp bans and criminal recidivism". *American Economic Journal: Economic Policy* 11.2, pp. 301–27.
- USDA (2020). *Broad-based Categorical Eligibility*. <https://fns-prod.azureedge.net/sites/default/files/resource-files/BBCESatesChart%28May2020%29.pdf>. Accessed: 2020-11-1.
- Waldinger, Daniel (2018). *Targeting in-kind transfers through market design: A revealed preference analysis of public housing allocation*.
- Whitmore, Diane (2002). "What are food stamps worth?"

10 Tables and figures

Table 1: Demographic characteristics for primary taxpayer in SNAP sample

	2007	2010	2013	2016	2019
Age					
0-18	.603	.563	.526	.493	.433
19-65	.384	.423	.445	.458	.452
65+	.024	.028	.044	.063	.130
Household type					
Children only	.172	.161	.146	.129	.097
Working-age adults only	.125	.159	.185	.209	.231
Single working-age adult w/ children	.428	.363	.352	.345	.325
2+ working-age adults w/ children	.249	.285	.269	.249	.211
Seniors only	.020	.023	.036	.054	.119
Seniors with children	.004	.004	.005	.005	.007
Race					
White	.220	.217	.214	.210	.214
Hispanic	.469	.508	.510	.508	.464
Black	.162	.132	.122	.117	.128
Asian/NH/PI	.033	.023	.024	.025	.027
SE Asian	.045	.036	.035	.035	.039
AI/AN	.008	.006	.006	.006	.006
Other	.063	.079	.088	.099	.122
Language					
English	.730	.727	.729	.731	.745
Spanish	.214	.230	.230	.226	.191
Other	.055	.043	.041	.043	.064
Earnings					
On case with earnings	–	–	.512	.560	.504
Average earnings (\$)	–	–	9,634	12,233	12,594
Observations	3,083,194	4,754,805	5,715,669	5,889,503	5,654,837

Notes. Table 1 summarizes the composition of the SNAP caseload in California for select years in my sample. I define the caseload to be all unique individuals enrolled for at least one month in the calendar year. Among these individuals, I identify the share in each of three age bins; the share in six different household types; the share in each of seven race codes; the share who speak English, Spanish or neither; and the share in cases with non-zero versus zero earned income.

Table 2: Comparing reentry rates in MEDS to CDSS's reported churn rates

Months	CDSS churn rate	MEDS reentry rate
1	11.8	10.5
3	14.3	17.2
6	–	29.7
12	–	42.2
18	–	48.5
24	–	52.6

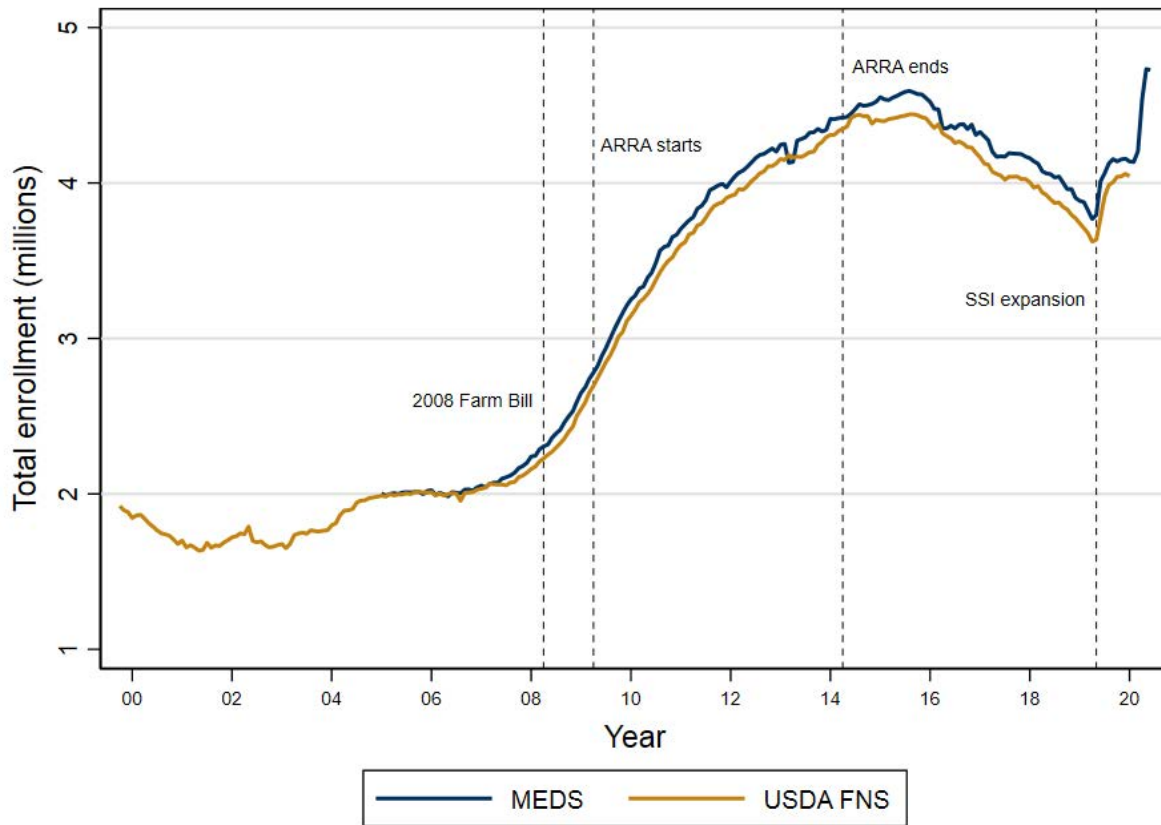
Notes. Table 2 summarizes the share of individuals who, after exiting, reenter SNAP within six different timelines, limited to individuals who exited after 2014. I calculate the share of individuals who exit the program and then re-enroll within t months, restricting attention to uncensored observations. I calculate the overall averages for the counties by averaging the quarterly rates.

Table 3: Average likelihood of exiting SNAP in reporting and non-reporting months by eligibility status

	Non-reporting months	Reporting months
Eligible	.022 (.000)	.117 (.001)
Ineligible	.053 (.000)	.324 (.000)

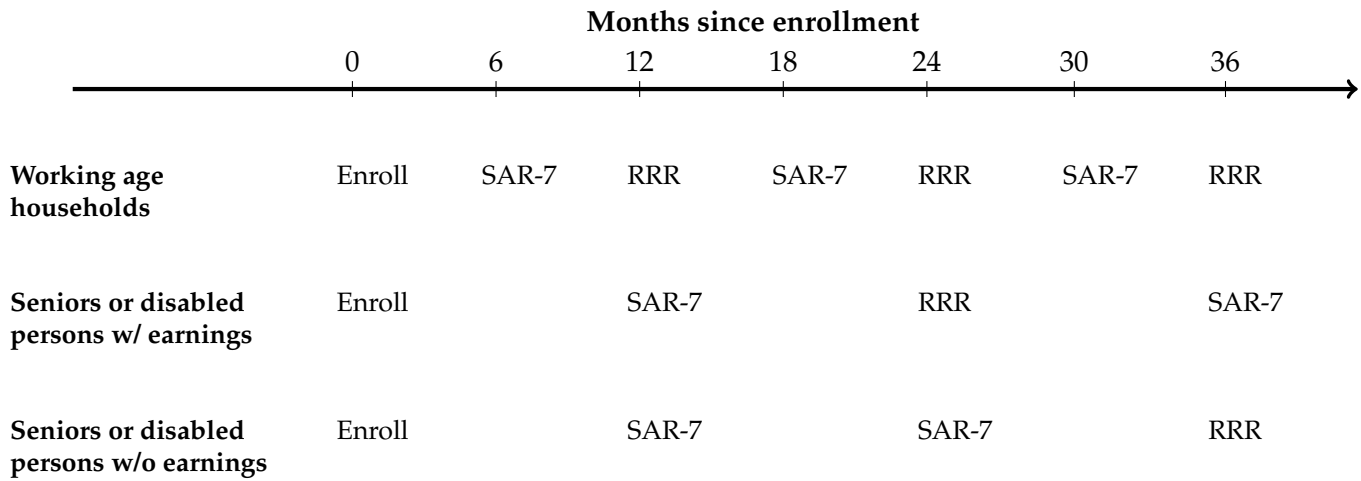
Notes. Table 3 summarizes the likelihood of exit by eligibility status in reporting and non-reporting months, limited to cases that started enrollment after 2014. I calculate these averages by estimating Equation 2, using an indicator for eligibility as the characteristic X , and then transforming the estimated log-odd ratios into average effects. Values in the parentheses represented Delta-method estimated standard errors.

Figure 1: Total monthly SNAP enrollment in California, 2000-2020



Notes. Figure 1 plots total SNAP enrollment for California from two data sources. The USDA counts are the official figures reported by the counties to the state, which are then reported to FNS at USDA. The MEDS count is the sum of individuals recorded as being enrolled in SNAP each month in the Medicaid Monthly Eligibility Files.

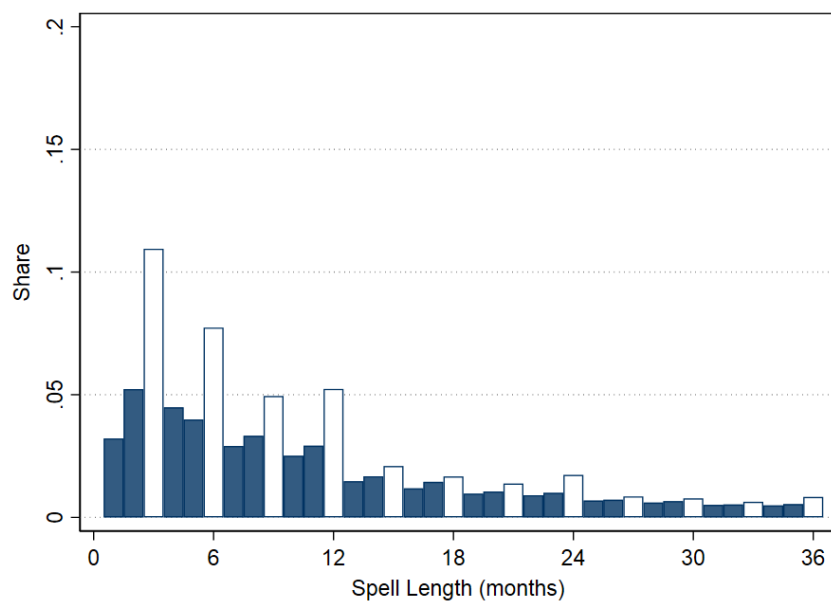
Figure 2: Recertification schedule



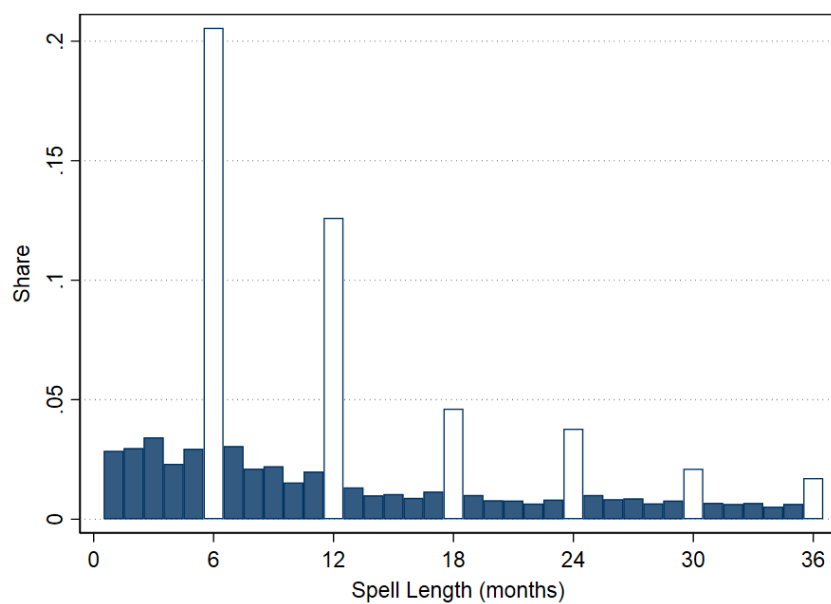
Notes. [Figure 2](#) illustrates the reporting schedule for three types of households. Most households must complete a periodic report (known as a Semi-Annual Report, or a SAR-7) six months after enrolling, and every twelve months thereafter. The household must complete a short form, identifying whether household members, sources of income, and deductible expenses have changed, and if so, how. Six months later, and twelve months after enrolling, the household must complete a full recertification (known as a RRR). This entails completing a longer form (known as a CF-37), including much of the same information, providing proof of earnings, and completing an interview with county staff. Households with seniors or individuals with a disability and without working-age adults, but who have some earned income, are allowed to extend the recertification schedule, such that they complete the SAR-7 twelve months after enrolling, and the RRR twenty four months after enrollment. Finally, households with seniors or disabled persons but no earned income only need to complete the RRR every 36 months and the SAR-7 every 12 months.

Figure 3: Frequency distribution of SNAP enrollment durations

(a) Spells beginning 2005 - 2011

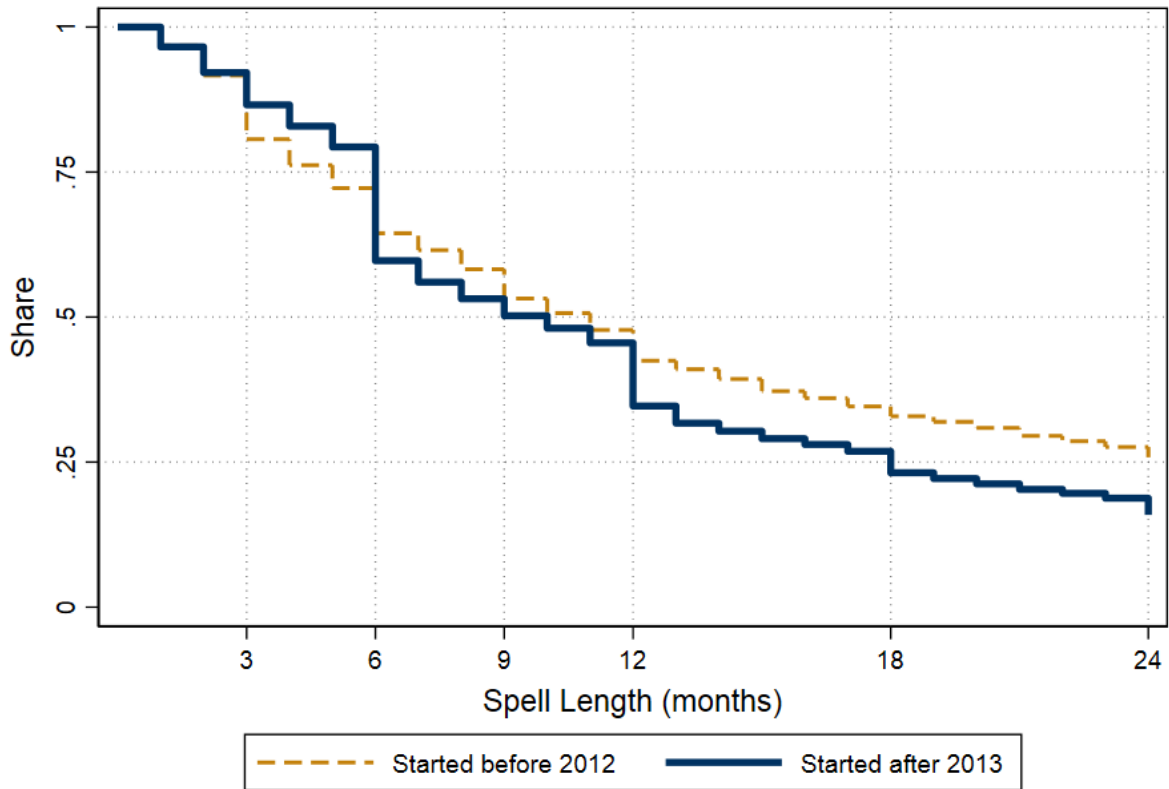


(b) Spells beginning 2014 - 2018



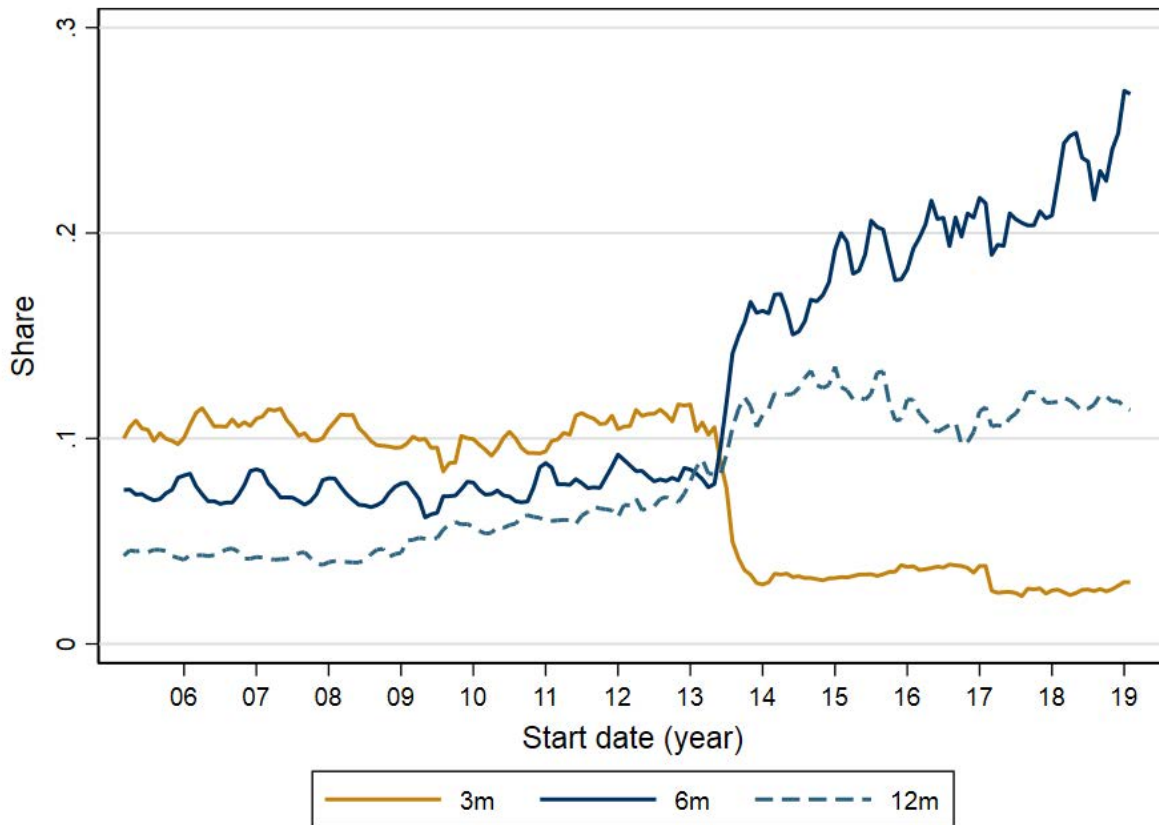
Notes. Figure 3 summarizes the frequency of enrollment spell lengths – periods of consecutive months in which individuals are receiving SNAP. I plot two versions of this distribution. Before October 2013, households had to recertify every three months, and every six months since then. Panel A includes spells that started at least two years before October 2013, and Panel B includes spells that began after October 2013. The white bars represent spell lengths that align with recertification periods. Before 2013, the most common enrollment spell was three months, which is when households had to submit their first quarterly report. Now, less than five percent of cases end at three months, and the most common spell length is six months, again, when households must first recertify.

Figure 4: Survival rates for SNAP recipients up to 24 months after enrollment



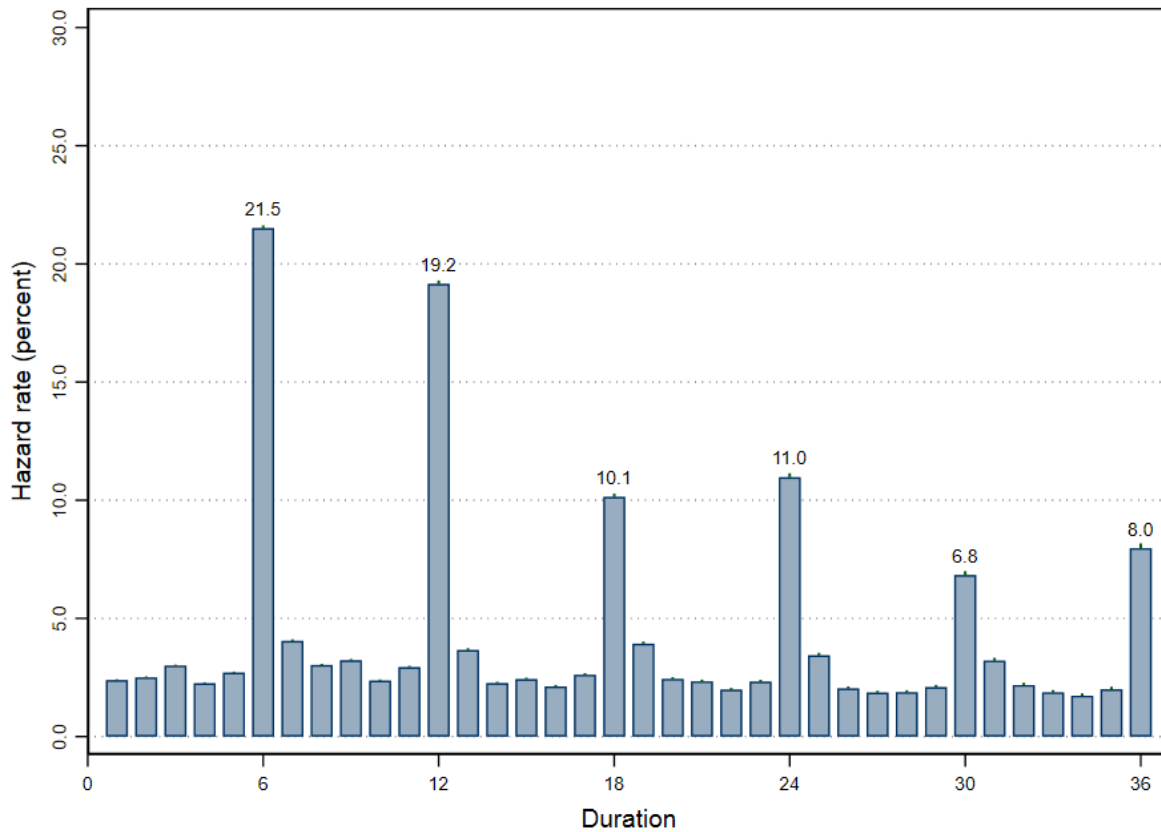
Notes. Figure 4 illustrates the share of recipients who remain enrolled in SNAP each month after their enrollment begins, up to 24 months. Again, I consider these patterns before and after the 2013 reform. The blue lines illustrate survival rates assuming that one-month gaps in the CDSS are true drops in participation, and the gold lines illustrate survival rates after I fill in one month gaps. The largest drops in participation occur in recertification months. Since 2013, around 40 percent of households leave SNAP within six months after enrolling. The difference in retention rates between the pre- and post-reform periods suggest that individuals will generally remain enrolled in SNAP until they are required to recertify. Filling in one month gaps in participation does not dramatically change these results, suggesting that low retention is neither a data issue nor a function of short breaks in enrollment.

Figure 5: Share of new cases who exit at three, six and twelve months after enrolling, Feb 2005 - Jan 2019



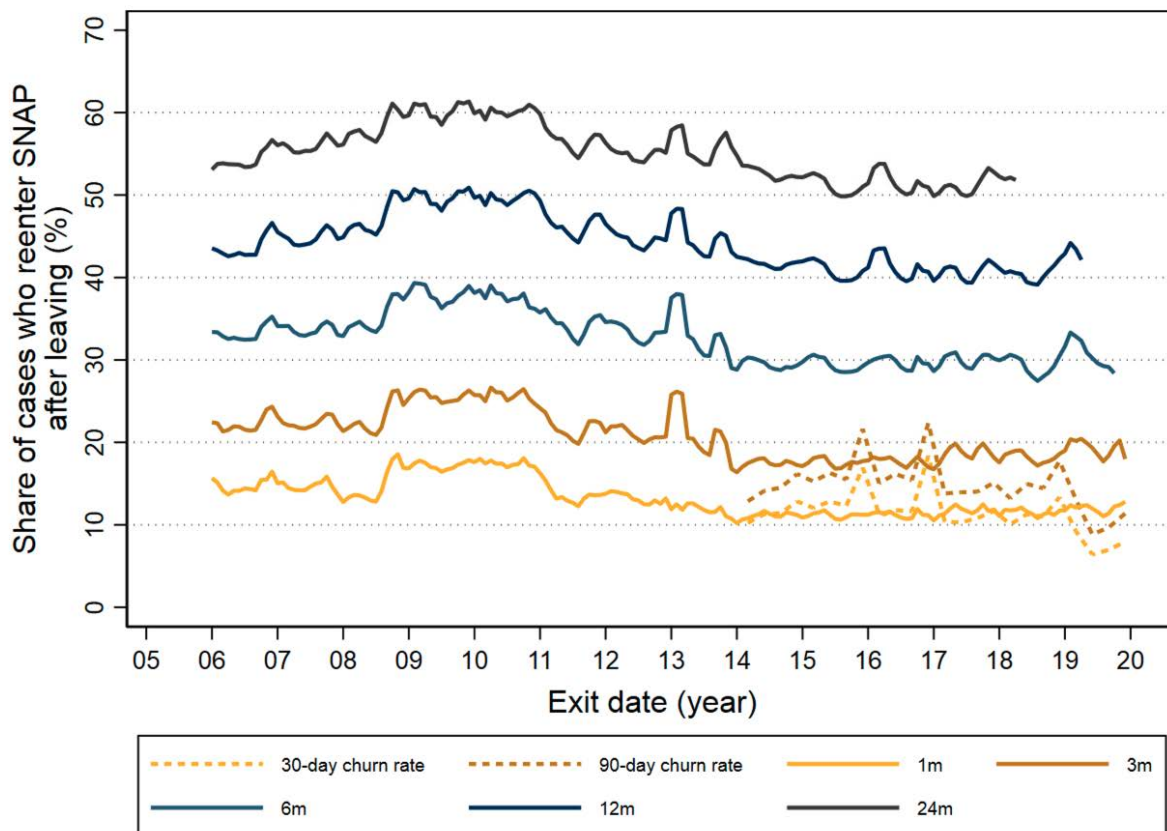
Notes. Figure 5 illustrates the rolling three-month average of the individuals who will exit in the 3rd, 6th, or 12th month after they enroll, over the first month of their enrollment. The transition to semi-annual reporting in 2013 resulted in many fewer cases leaving after three months, and many more leaving at six. The share leaving at twelve months also grew. As the economy improved since 2013, the share of cases exiting at six months also trended upward.

Figure 6: Hazard rates of program exit by enrollment duration



Notes. Figure 6 reports the hazard rates by enrollment month, or the likelihood that any given person will leave SNAP in that month conditional on remaining enrolled up to that month. I estimate these hazard rates by estimating a logit regression on dummies for enrollment duration, as well as county, date and household type fixed effects. I restrict to cases that started between 2014 and 2018, as these cases were only exposed to the post-2013 reporting policy and had the possibility of remaining enrolled for at least 24 months. After estimating the logit, I identify average marginal effect of enrollment duration on exit.

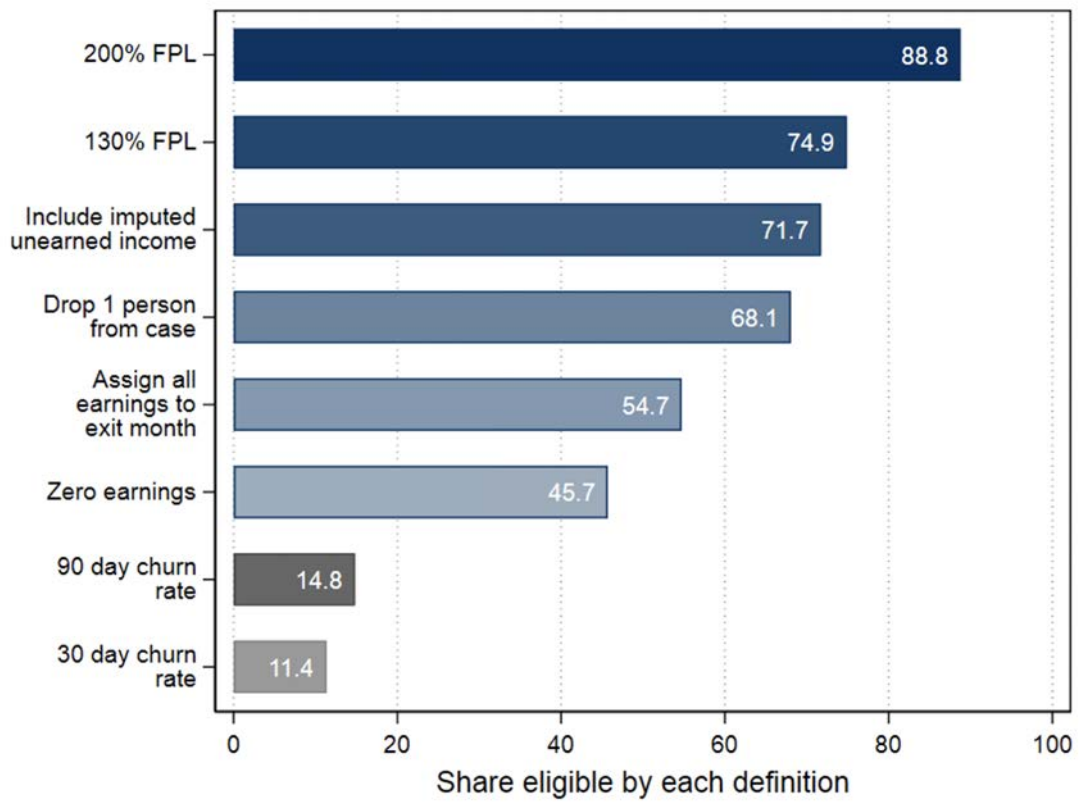
Figure 7: Share of cases that reenter SNAP by five different timelines over exit dates



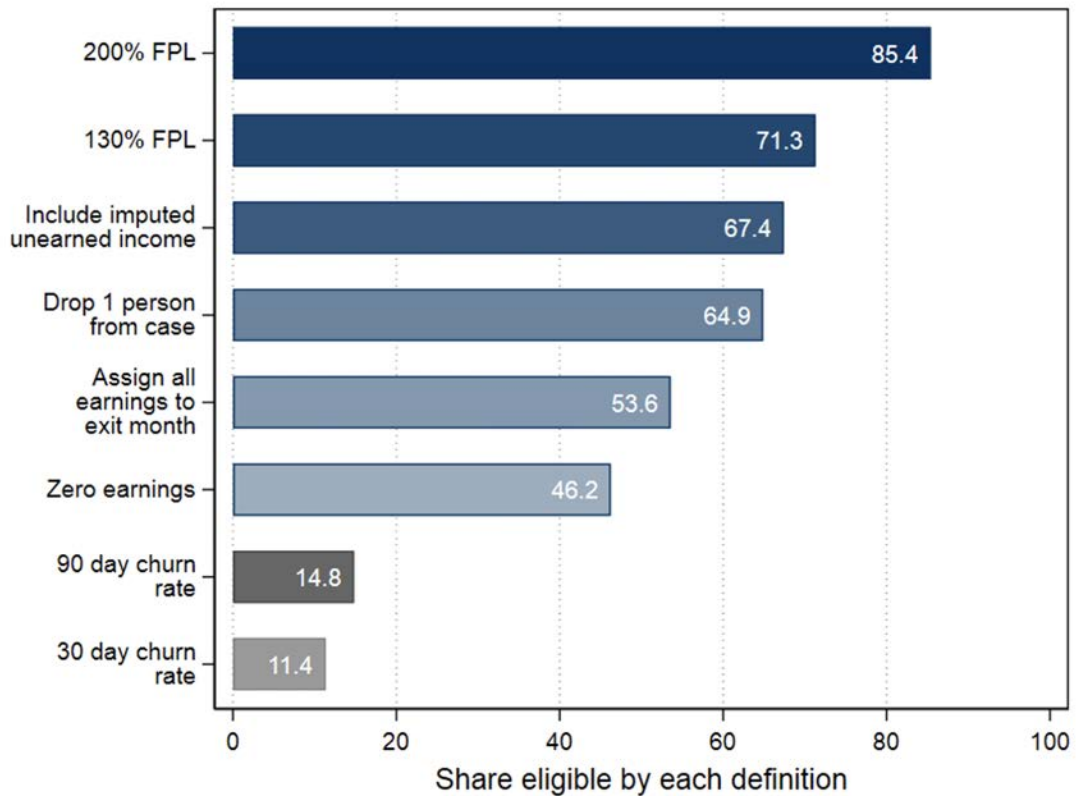
Notes. Figure 7 plots the share of cases ending in each month who re-enroll within each of the identified timelines. I calculate these reentry measures in three steps. First, I count the number of instances in which an individual re-enrolls in SNAP within 1, 3, 6, 12, 18 or 24 months after exiting. Next, I count the number of enrollment spells that ended with enough time such that I can observe reentry within the relevant timeline. I measure the share of reentries within each timeline by dividing the first count by the second. For clarity, the trend lines reported here represent the three-month moving average over each year-month. There is a mechanical relationship among these trends: a one-month reentry also qualifies as reentry within 24 months, meaning that spikes and dips will reverberate upward.

Figure 8: Share of cases exiting SNAP that appear income eligible

(a) Using earnings from the quarter in which the case leaves SNAP

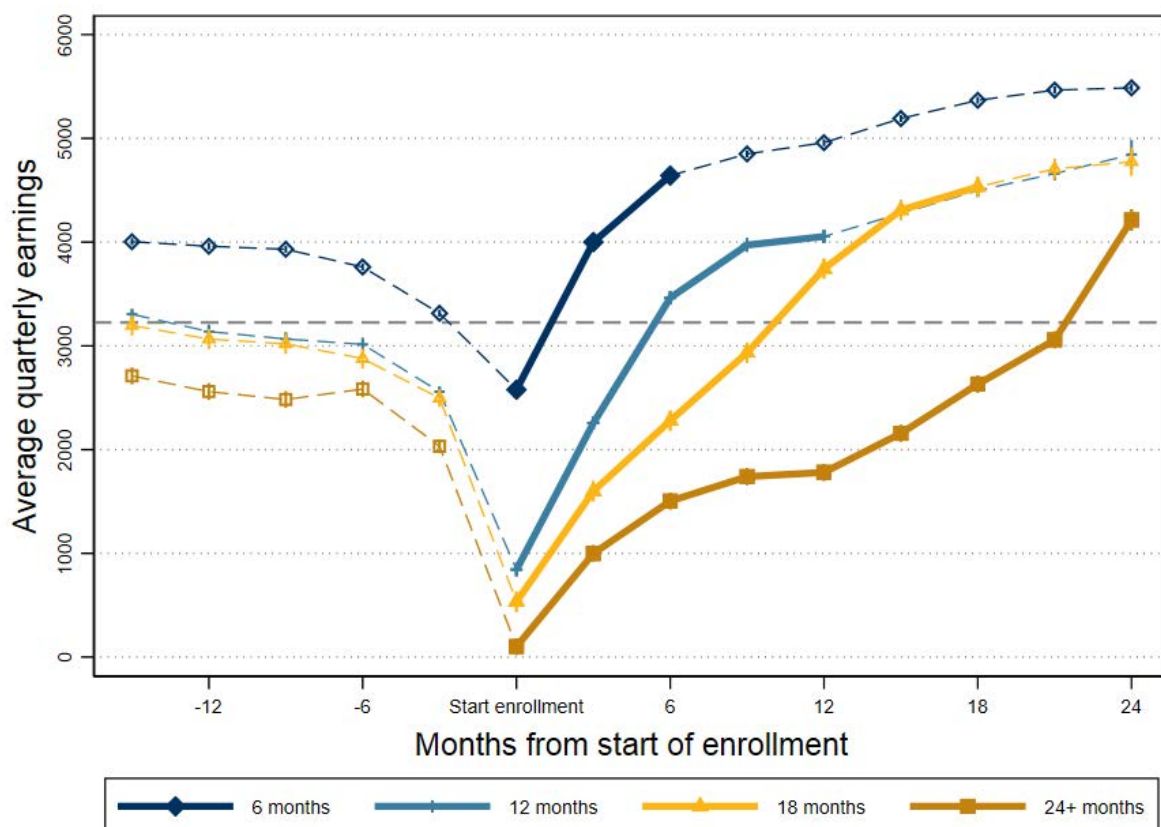


(b) Using earnings from the quarter after the case leaves SNAP



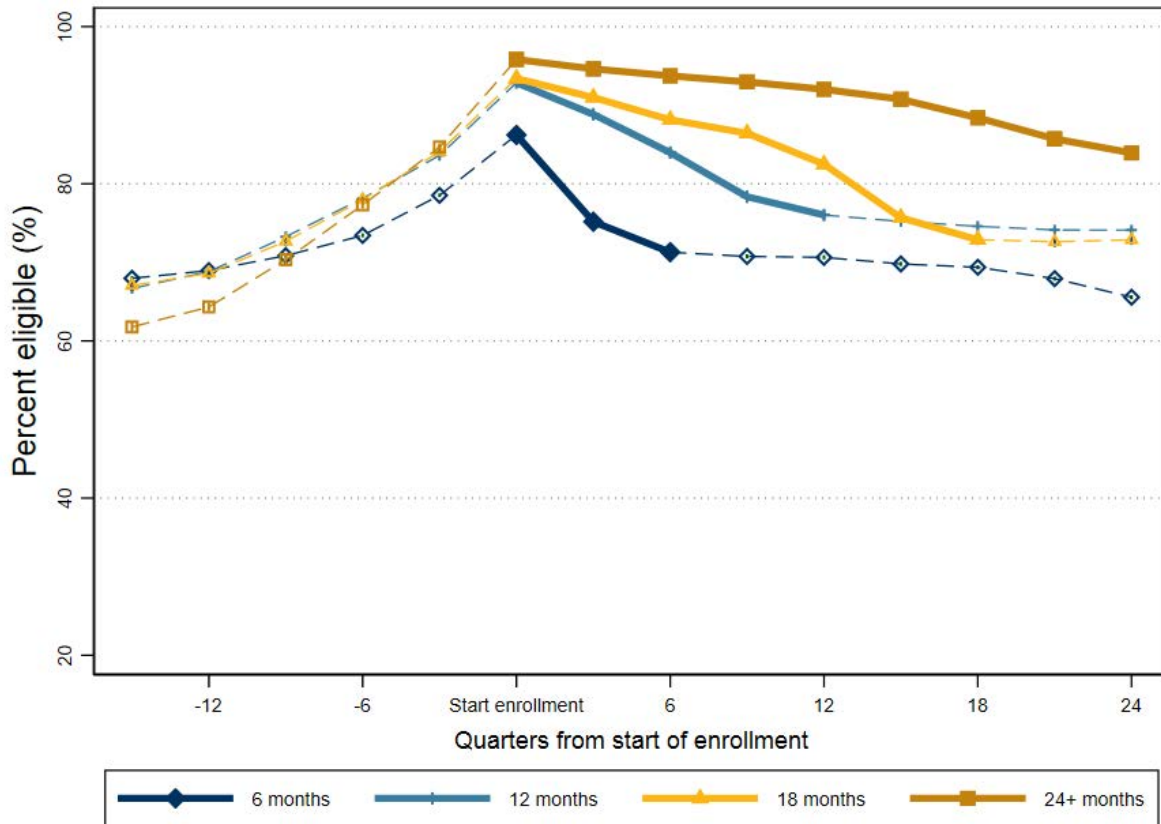
Notes. Figure 8 reports the share of cases who exit SNAP but appear income eligible according to various eligibility definitions. I restrict to cases that leave SNAP at the end of a calendar quarter between December 2013 to December 2019. Panel A uses earned income from the quarter in which the case leaves SNAP, and Panel B uses earned income from the quarter immediately after the case leaves SNAP. In the first definition, I compare one-third of a household's total earned income to 200 percent of its monthly FPL. In the second, I use 130 percent of the households' FPL. Third, I identify whether one-third of a household's total quarterly income, plus the average unearned income for its households type assigned using the procedure described in the appendix, exceeds 130 percent of the household's FPL. Fourth, I identify whether one-third of a household's total quarterly income exceeds 130 percent of the household's FPL, assuming their household size was reduced by one person. Fifth, I identify whether a households' total quarterly income exceeds 130 percent of the household's FPL; this test is equivalent to assuming that the household receives all of their quarterly income in the month of, or immediately following, their recertification.

Figure 9: Average monthly earnings before, during, and after SNAP enrollment by spell length



Notes. Figure 9 plots average household earnings for each quarter relative to the quarter before enrollment starts. I separate these estimates between cases exiting SNAP at six, twelve, eighteen and more than 24 months. I identify these averages by regressing quarterly earnings on a vector of dummies for each quarter relative to the quarter before enrollment in SNAP starts. I also include an indicator for spell length and an interaction between spell length and the relative quarter dummies, as well as fixed effects for calendar quarter, demographic characteristics and household type. I limit to spells between 2014 and 2019, for whom I have complete earnings information and the standard recertification window was 6 months. I also restrict to cases that begin at the start and end at the close of quarters, so that I am able to distinguish between income earned while enrolled and not enrolled. Finally, I restrict to spells in which the enrollee does not return to SNAP within 12 months after exiting. Post regression, I predict average earnings for each relative quarter separately for each spell length, and at the means of the other covariates. The solid lines and markers indicate quarters in which the case is still enrolled in SNAP, while hollow markers and dashed lines represent quarters in which the case is not enrolled. The dotted horizontal line identifies the average quarterly earnings (\$3230) in quarters within one year on either side of when enrollment starts.

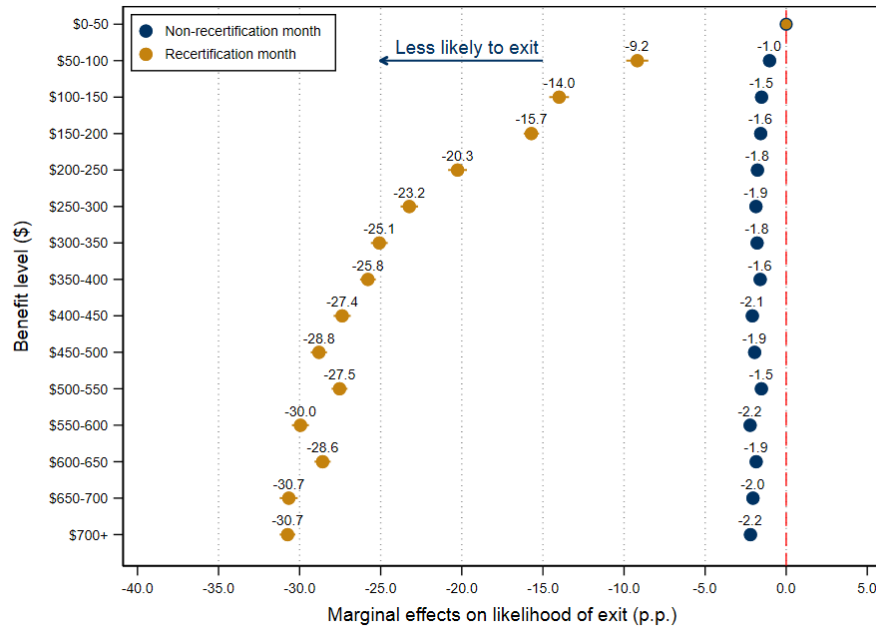
Figure 10: Share of cases that appear income eligible each quarter relative to case's initial enrollment in SNAP



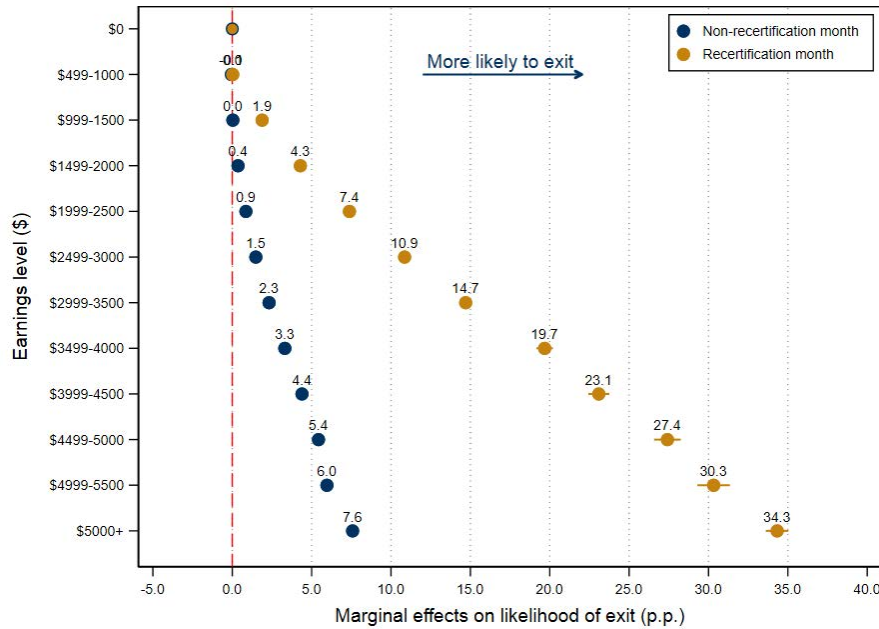
Notes. Figure 10 plots the share of cases that appear income eligible each quarter relative to when they first enroll separated by spell length. Analysis is restricted to spells between 2014 and 2019, for which I have complete earnings information and the standard recertification window was 6 months. I also restrict to cases that begin at the start and end at the close of quarters, so that I am able to distinguish between income earned while enrolled and not enrolled. As noted in the body of the paper, these shares might not reach 100 percent, as expected, because a number of households will still qualify even if their income exceeds 130 percent FPL, because they are able to deduct the cost of numerous expenses. It is also the case that the verification process is imperfect, and a small share of households who have incomes above the eligibility threshold for some month during the quarter will be able to remain enrolled.

Figure 11: Likelihood of exiting SNAP by household benefit amount and earned income

(a) Benefit amount

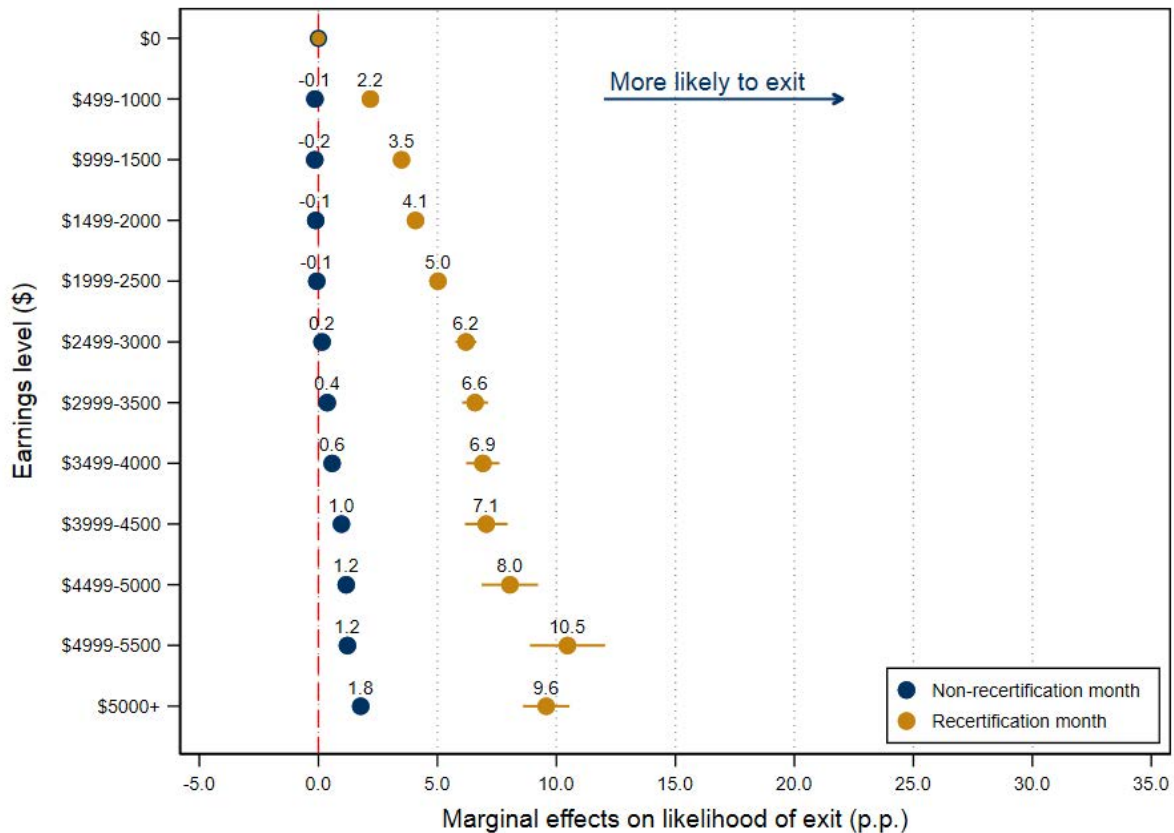


(b) Earned income



Notes. Figure 11 reports the marginal effect on likelihood of exit by earnings levels and benefit amounts in recertification and non-recertification months. I calculate these effects by first estimating Equation 2 and then identifying the difference between the predicted probabilities of exit for each benefit and earnings level, relative the baseline, at the mean effect of all other covariates in that model. The baseline likelihood of exit for households with \$0-50 in SNAP benefits is 4 percent in non-recertification months and 37 percent in recertification months. The baseline likelihood of exit for households with no earnings is 2 percent in non-recertification months and 10 percent in recertification months.

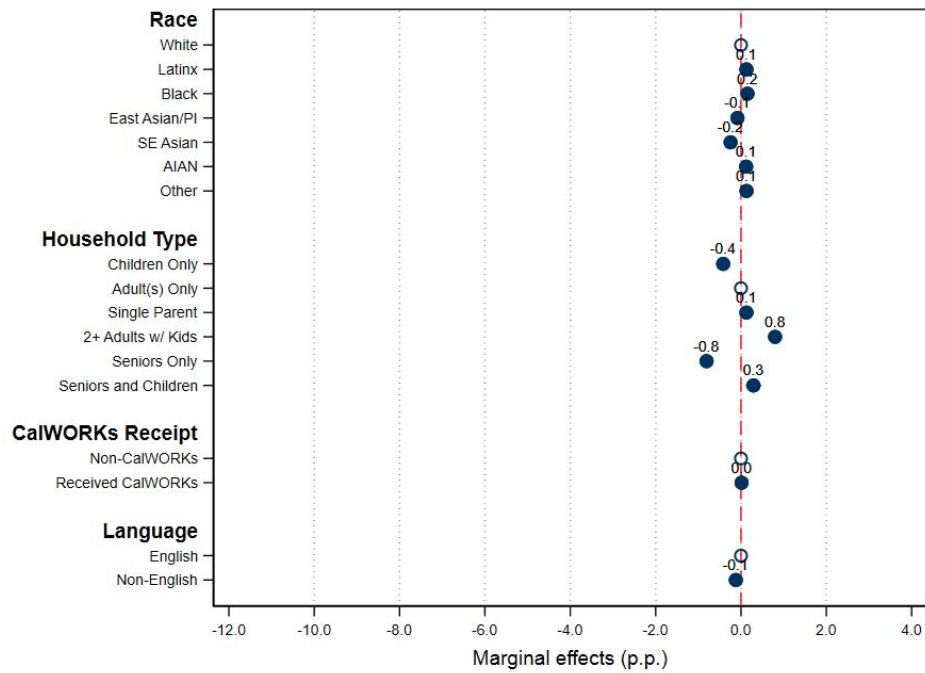
Figure 12: Likelihood of exiting SNAP at a recertification by household earnings 12 months before initial enrollment



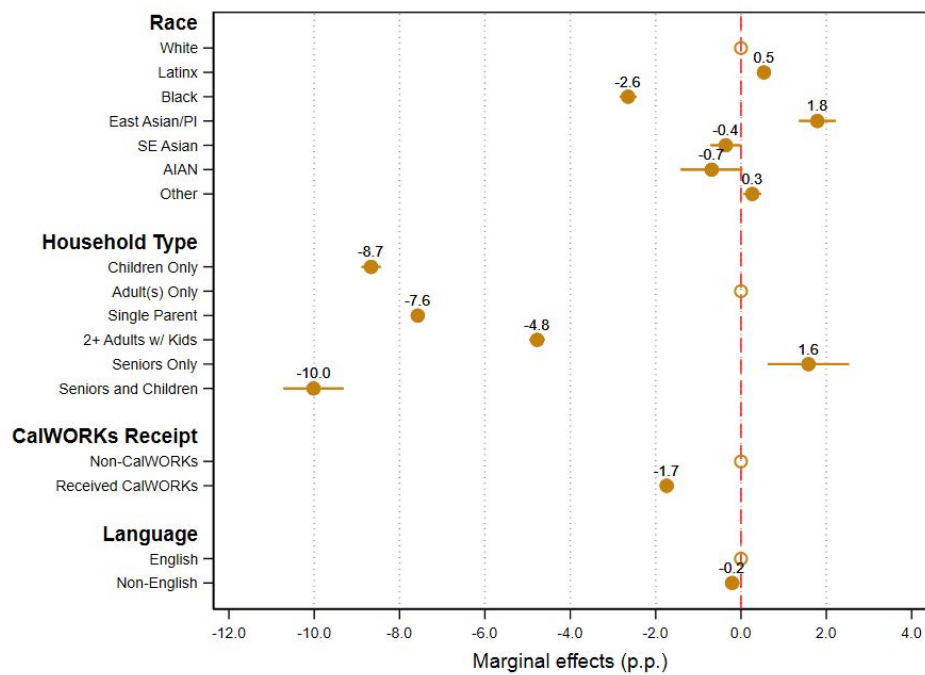
Notes. Figure 12 reports the marginal effect on likelihood of exit in recertification and non-recertification months by earnings levels 12 months before enrollment starts. I calculate these effects by first estimating Equation 2 and then identifying the difference between the predicted probabilities of exit for each benefit and earnings level, relative to the baseline, at the mean effect of all other covariates in that model. The baseline likelihood of exit for households with \$0 in earnings one year before enrollment starts is 3 percent in non-recertification months and 13 percent in recertification months.

Figure 13: Likelihood of exiting SNAP at a recertification by demographic characteristics

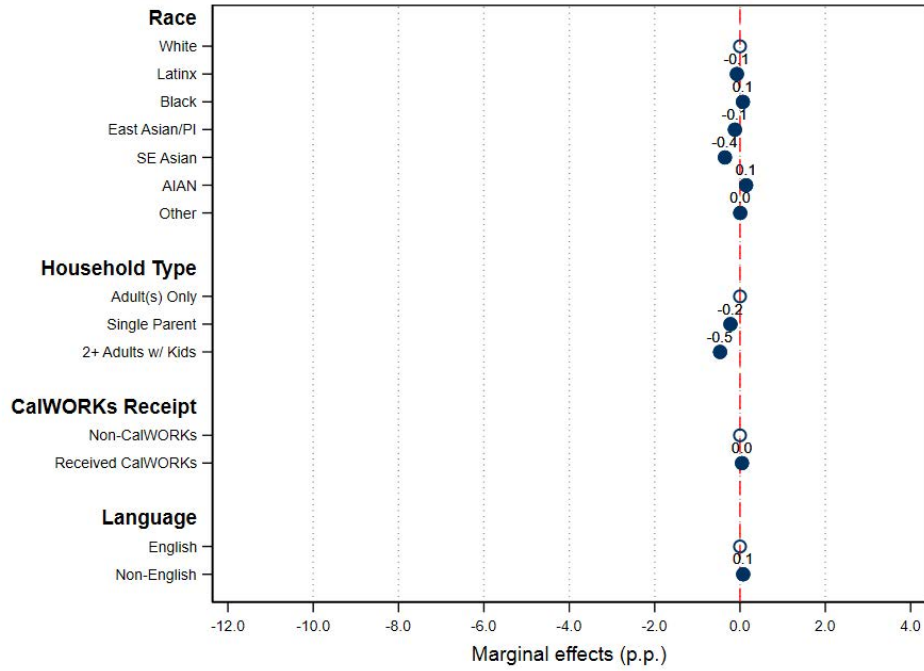
(a) Non-recertification months



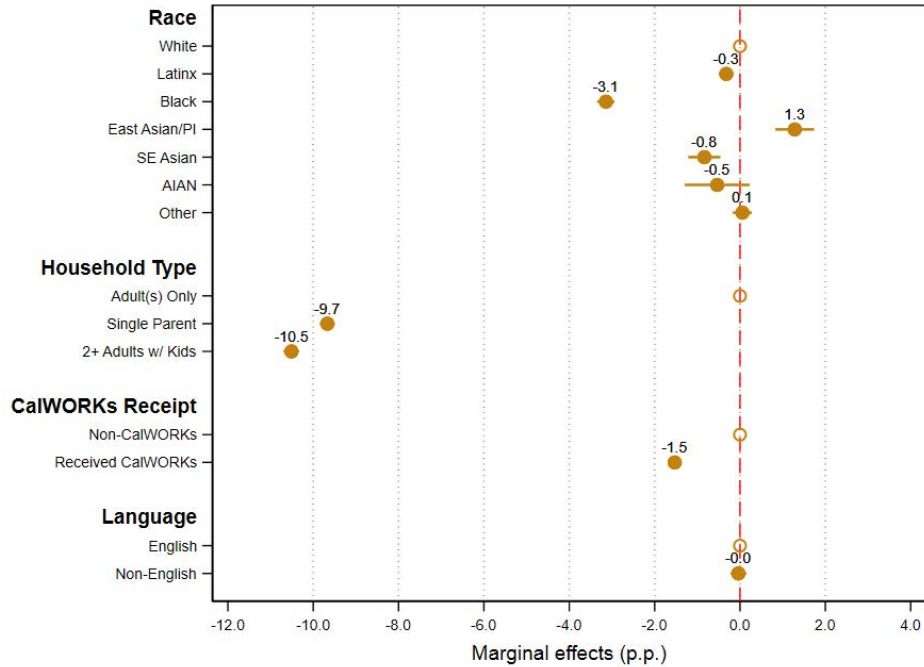
(b) Recertification months



(c) Non-recertification months, controlling for earnings

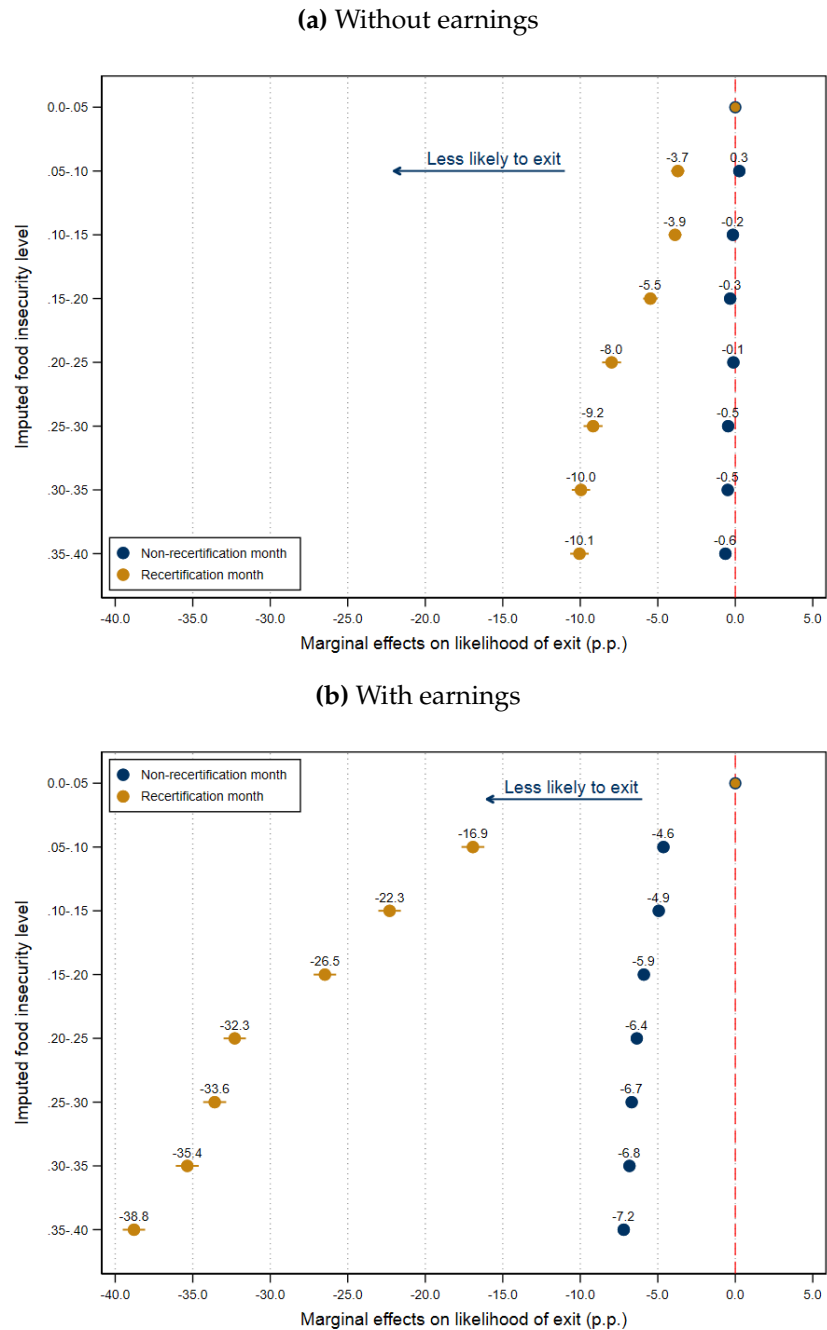


(d) Recertification months, controlling for earnings



Notes. Figure 13 reports the marginal effect on likelihood of exit in recertification and non-recertification months by listed demographic characteristics. I calculate these effects by estimating Equation 2 and then identifying the difference between the predicted probabilities of exit for each benefit and earnings level, relative to the baseline, at the mean effect of all other covariates in that model.

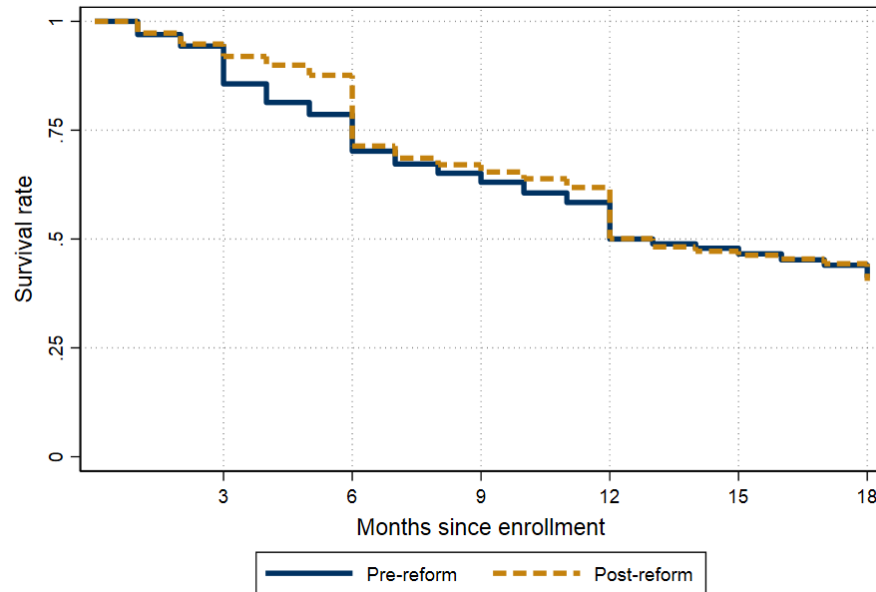
Figure 14: Likelihood of exiting SNAP at a recertification by imputed food insecurity level



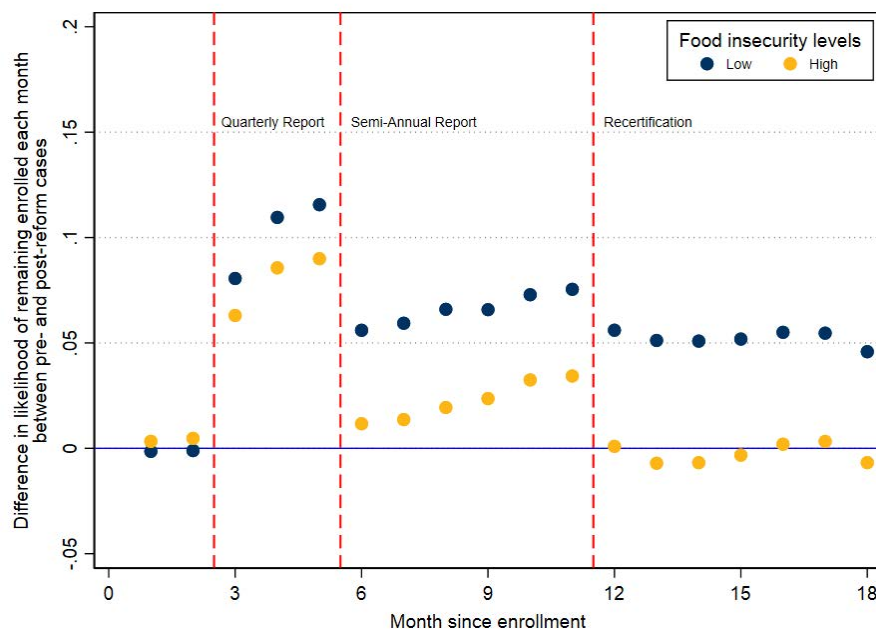
Notes. Figure 14 reports the marginal effect on likelihood of exit in recertification and non-recertification months by levels of imputed food insecurity. These effects come from estimate Appendix Equation 1, and I then transform the estimated log odds to average marginal effects relative to the same baseline and holding all other covariates at their means. In order to demonstrate the important of earnings to food insecurity, and to isolate the relevance of demographic characteristics like race and household composition by themselves, I estimate these effects using earnings in the food insecurity assignment and not. For Panel A, I assign households a predicted level of food insecurity without using their earned income. For Panel B, I incorporate households' earnings. See ?? for more information about this imputation. The baseline likelihood of exit for households with lowest level of imputed food insecurity (not including earnings) is 3 percent in non-recertification months and 22 percent in recertification months. The baseline likelihood of exit for households with lowest level of imputed food insecurity (including earnings) is 9 percent in non-recertification months and 46 percent in recertification months.

Figure 15: Survival rate for SNAP recipients with lowest food insecurity by whether they enrolled before or after recertification reform took place

(a) Average survival rate for pre-reform and post-reform cases



(b) Differences in survival rates between pre-reform and post-reform cases, by levels of predicted food insecurity



Notes. Figure 15 illustrates the effect that the 2013 recertification reform had on survival rates. In Panel A, plot survival rates for cases that began between January and June 2013 (pre-reform) and those that began between July 2013 and December 2013 (post-reform). The reform decreased the exit rate at three months, but the average survival rates converge after six months. Panel B distinguishes this effect between cases identified as high and low food insecurity.

Appendix

A Unearned Income

I use SNAP Quality Control files (produced for USDA and made publicly available by Mathematica), as well as San Francisco case records, to study whether my inability to observe unearned income – like child support payments, Social Security benefits, and pension benefits – in my CDSS data risks my overstating the share of exiting households that are eligible for SNAP. The SNAP QC files come from surveys of randomly selected households enrolled in SNAP; these surveys are administered to ensure that states and counties are providing enrolled households with appropriate benefit amounts and not delivering assistance to ineligible households. The files contain highly detailed data on all household members' economic circumstances and demographic characteristics from FY 2013 to FY 2018. The San Francisco data includes case-level information on earned and unearned income, household composition, and benefits amounts every month between June 2016 and June 2019 (inclusive) for all cases active in those months. I use these data to document the total unearned income for each case.

Most enrolled households receive unearned income. In both datasets, approximately 60 percent of households report receiving some form of unearned income. The average amount received among all households is similar in both datasets: about \$400 each month. If I condition on receiving any unearned income, the average increases to \$600 for households in the SNAP QC data and \$800 in the San Francisco data.

As expected, the likelihood of receiving unearned income, and the amount of unearned income that they receive, varies significantly by household type. For example, households with seniors (65+) are much more likely to report receiving unearned income and have higher average unearned income. Only 30 percent of households with earned income receive any unearned income. The average monthly unearned income among households with both earned and unearned income is about \$500.

In Appendix [Figure 1](#), I present the distribution of unearned income for four household types: those with and without seniors, and those with some or no earned income. A very few number of households report receiving unearned income above \$2,500 in a given month. Both data sources exhibit similar patterns. In both, the share of households with monthly unearned income above \$1,000 is very small. Only households with seniors tend to have unearned income above \$1,000. And for households with earned income, the share receiving significant amounts of unearned income is very low. Households with earned income that approaches their eligibility thresholds are very unlikely to receive unearned income, and households receiving significant unearned income generally do not have earned income. Households with the highest unearned income still report receiving amounts that suggest they would be eligible for SNAP. Together, this evidence suggests that even if I could observe each household's unearned income, most households would remain income eligible.

I pursue one final exercise to make this point clear. I identify the average total unearned income for each of 128 different household types in each year. I group households according to monthly earned income (four bins of \$0, \$0 to \$1000, \$1000 to \$2000, and \$2,000+), number of adults (0, 1, 2, 3+), number of children (0, 1, 2, 3+), and the presence of seniors. I group cases observed in the full SNAP data into the same household types. I apply the average unearned income data observed in the SNAP QC files to the corresponding household types in the SNAP data. I add each households' earned income to this simulated average unearned income, and re-calculate whether they appear income ineligible. This results in a negligible change in the average eligibility rate among leavers (See [Figure 8](#)).

Though I find that average reported unearned income among SNAP recipients is fairly low, suggesting it might not affect my measure of how many exiting households are still eligible for SNAP, I am unable to observe unearned income after a household leaves the program in either the SF case data or the SNAP QC files. Both only contain information for households while they're enrolled. I cannot rule out that households leave SNAP because of an increase in unearned income, which is recorded only after they leave.

I study this relevance of this using the Survey of Income and Program Participation (SIPP), a nationally representative panel survey of several thousand households interviewed every few months over a three to four year period. Respondents are asked to recall their individual- and household-level earned income and unearned income, as well as the income support programs in which they're enrolled, for the month they're surveyed as well as the three previous months. I use the 1996, 2001, 2004, and 2008 panels of the SIPP, spanning 1996 through 2013. I use these data to replicate [Equation 1](#). Here, I study how reported earnings and unearned income changes each month relative to when households report first enrolling in SNAP.

I restrict to households ever enrolled in SNAP. I exclude households that are already enrolled in SNAP in the first month of their respective panel, since I cannot be sure how long they have been enrolled. I also exclude households that drop out of the survey but then return. Among the remaining households, I identify the first month that a household reports enrolling in SNAP, and I identify their total household earned and unearned income for 8 months before and 16 after that month. I then regress the amount of earned and unearned income on dummies for month relative to that initial enrollment month, controlling for household type, state and year fixed effects. I interact these month dummies with indicators for spell length. I plot the coefficients, which identify the relative change in earnings relative to the start of enrollment, for each month in the figures below.

Changes in reported earned income exhibit a similar pattern to those in the administrative data; enrollment starts when earnings fall, and earnings recovers at different rates depending on how long the household remains enrolled. However, I find no such pattern for unearned income. On average, neither initial enrollment nor program exit correspond with a change in unearned income. Reported unearned income remains fairly constant among these households before, during and after SNAP enrollment.

My inability to observe unearned income for households enrolled in SNAP does not risk my significantly overstating SNAP eligibility among those who exit. Average unearned income is low for households with earnings, meaning add households' true unearned income to their earnings is unlikely to push many into ineligibility. The average amount of unearned income received by households without earnings would still qualify most for the program, and households who leave SNAP do not exhibit significant changes in unearned income.

B Food insecurity in the Current Population Survey

I impute predicted food insecurity using the Current Population Survey (CPS) December Food Security Supplement (FSS). This survey, administered every December alongside the monthly CPS, gathers information on a range of food security-related questions for more than 50,000 households each year. USDA uses their responses to identify whether the household is food insecure. I measure likelihood of food insecurity for different household types and demographic characteristics. I then create predicted measures of food insecurity for all possible combinations of variables observable in both the CPS and our CDSS data, and assign these rates to our SNAP households.

B.1 Measuring food insecurity

I collect individual-level data from the December Basic Monthly CPS as well as the Food Security Supplement for the years 2005 to 2018 (the most recent year for which this data is available). The Basic Monthly CPS includes a range of detailed demographic data on all individuals residing in households included in the survey, including age, race, sex, education level, employment status and marital status for all individuals. In conjunction with the data provided from the responses to the Basic Monthly Survey questions, the December Supplement also asks a range of food security related questions. All households included in the Basic Monthly CPS for the month of December are eligible to be included for the Food Security Supplement. There is an initial screening for households with incomes in excess of 185 percent of the Federal Poverty Line. For households above this threshold, if they do not respond affirmatively to any questions that suggest possible food insecurity, they are removed from the Food Security Supplement sample. On average, approximately 80 percent of households are administered the full FSS panel of questions each December.

In order to construct a measure of food insecurity, the FSS asks households a range of questions regarding residents' access to food, including their ability to pay for food and whether individuals had to restrict meal sizes or substitute types of foods due to financial constraints. Using responses to these individual questions, a measure of food insecurity is then constructed ranging from "not food insecure" to "very food insecure." Appendix [Table 2](#) presents the distribution of households included in our sample across this food security measure. Households that are food insecure are categorized as having either "low" or "very low" food security. Both

low and very low food security households experienced periods of time during the past year where they were forced to reduce the quality or variety of their diets; very low food security households additionally experienced reduced quantities of food intake at some point during the year.

Using the measure reported above, I classify all households as either (1) not food insecure if they report being food secure or (2) food insecure if they report being either low food security or very low food security. In Appendix [Table 3](#) below, I present summary statistics for this binary food insecurity measure by demographic and household composition characteristics.

B.2 Likelihood of food insecurity

Using the individual level data described above, I restrict the sample to individuals with non-missing values for age, race, and sex. With this sample, I estimate logit regression specified below.

$$\Pr(Y_i = 1) = \beta_0 + \beta_1 \text{Race}_i + \beta_2 (\text{Sex}_i \times \text{Age}_i \times \text{Adults}_i \times \text{Children}_i) + \theta_y + \varepsilon_i \quad (4)$$

I discretize age into four bins: 0-17, 18-34, 35-60, and 60 and older. The number of adults is a dummy variable for whether there's one or more than one adult in the household. The number of children is a factor variable indicating whether there are 0, 1, or 2 or more children residing in a given household. *Race* is a factor variable with five levels corresponding to whether a given observation identifies as white, black, Hispanic, Asian or Pacific Islander, or Native American. θ captures average differences in food insecurity rates across years across all individuals. Since the CPS is designed to be representative at both the state and national level, I estimate variations of the model above for both the US as a whole and California specifically. Finally, I make use of the earnings data reported in the Outgoing Rotation Group (ORG) sub-sample to construct a measure of household monthly earned income and include a binned version of this measure in the specifications described above. In specifications making use of earnings data from the ORG sub-sample of households, income is binned in \$500 increments, with levels included for both ORG households reporting zero dollars in earned income and households that were not included in the ORG.

Using the estimated coefficients from this model, I identify the predicted level of food insecurity for all combinations of these variables. Not all such combinations of demographic characteristics are present in the observed data, so prior to generating predicted values I expand our data set such that all possible demographic combinations are included and then I generate the predicted values.

Appendix [Table 3](#) reports summary statistics for each of these measures as well as a detailed description of the sample that is included in each specification. Appendix [Figure 3](#) below displays the distribution of predicted food insecurity by race, and number of adults and number of children in the CPS household.

Appendix Table 1: Share of households that receive unearned income, and average unearned income amount, among SNAP cases in SF case records and SNAP QC records

	SF cases		SNAP QC	
	Share	Monthly average	Share	Monthly average
All households	.59	\$790	.59	\$776
Households with seniors	.80	\$971	.91	\$930
Households with children	.57	\$686	.51	\$673
Households with earned income	.28	\$543	.32	\$533

Notes. Appendix [Table 1](#) reports the fraction of households in each dataset who report receive unearned income, and the mean monthly amount of unearned income among those households. For the Mathematica data, households are defined as received unearned income if they report receipt during the one month they're surveyed. For the SF data, households are defined as received unearned income if they report receipt in any month during their enrollment spell. The monthly average amount represents the mean unearned income amount received by households during the months in which they report receiving any unearned income. For the SF case data, in which we observe households for multiple months, I identify each household's average amount over months in which they report receiving any unearned income, and then calculate the average over all these household means.

Appendix Table 2: Share of households that receive unearned income, and average unearned income amount, among SNAP cases in SF case records and SNAP QC records

Household food insecurity scale	Number of individuals	Percent of sample
Food secure	1,254,490	86
Low food security	131,327	9
Very low food security	68,324	5

Notes. Appendix [Table 2](#) identifies share of CPS sample identified as food secure, food insecure, and very food insecure. The sample is all individuals included in the universe of respondents for the CPS-FSS survey as indicated by the variable *fsstatus* (IPUMS variable) and with non-missing food security status level for survey years 2005-2013.

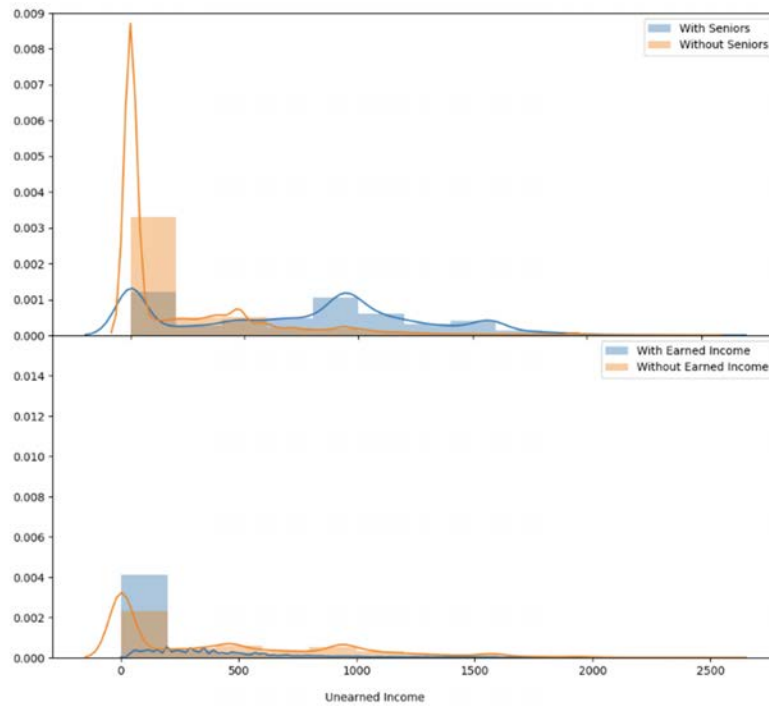
Appendix Table 3: Average levels of food insecurity by individual and household demographics

	Mean	SD
Race		
White	0.103	0.304
Black	0.253	0.435
Latinx	0.236	0.425
Asian/Pacific Islander	0.095	0.294
Native American	0.258	0.437
Number of Children		
0	0.096	0.294
1	0.153	0.360
2+	0.190	0.392
Number of Adults		
Single Adult	0.206	0.404
Multiple Adults	0.123	0.329
Age		
0-17	0.191	0.393
18-34	0.157	0.364
35-59	0.126	0.332
60+	0.074	0.262

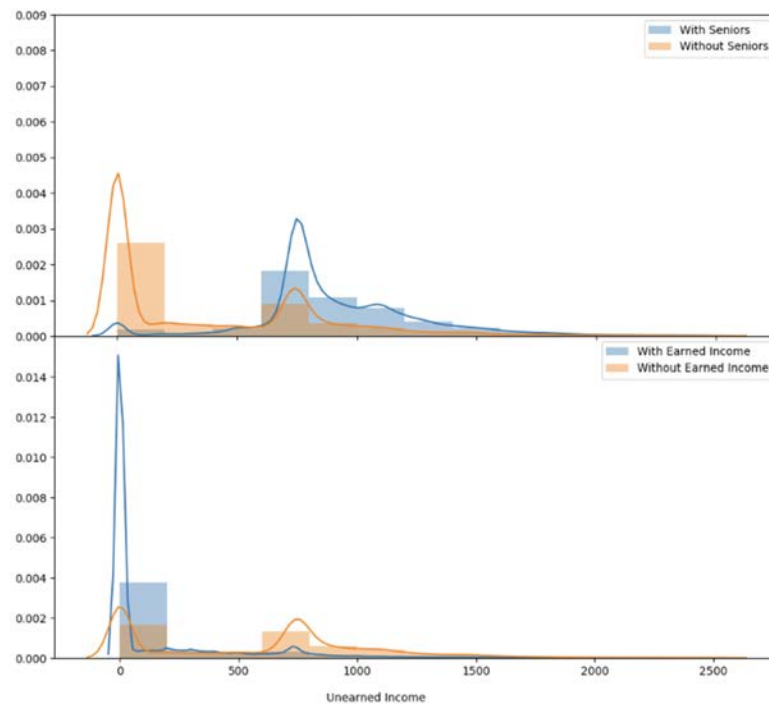
Notes. Appendix [Table 3](#) identifies share of each person type that is identified as being food insecure. The sample is all individuals included in the universe of respondents for the CPS-FSS survey as indicated by the variable *fsstatus* (IPUMS variable) and with non-missing food security status level for survey years 2005-2013.

Appendix Figure 1: Distribution of unearned income among households enrolled in SNAP

(a) SF cases (2016-2019)



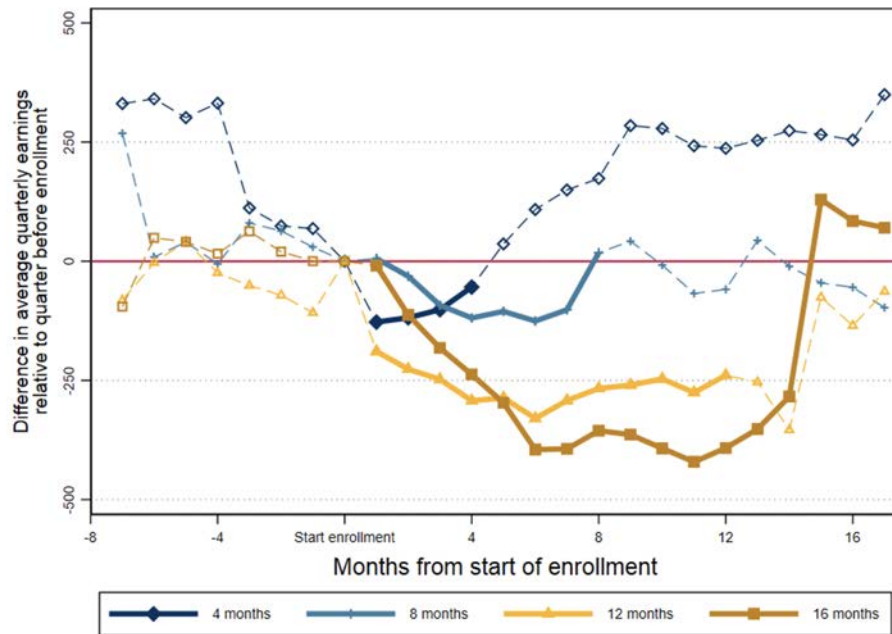
(b) SNAP QC cases (FY2013-FY2018)



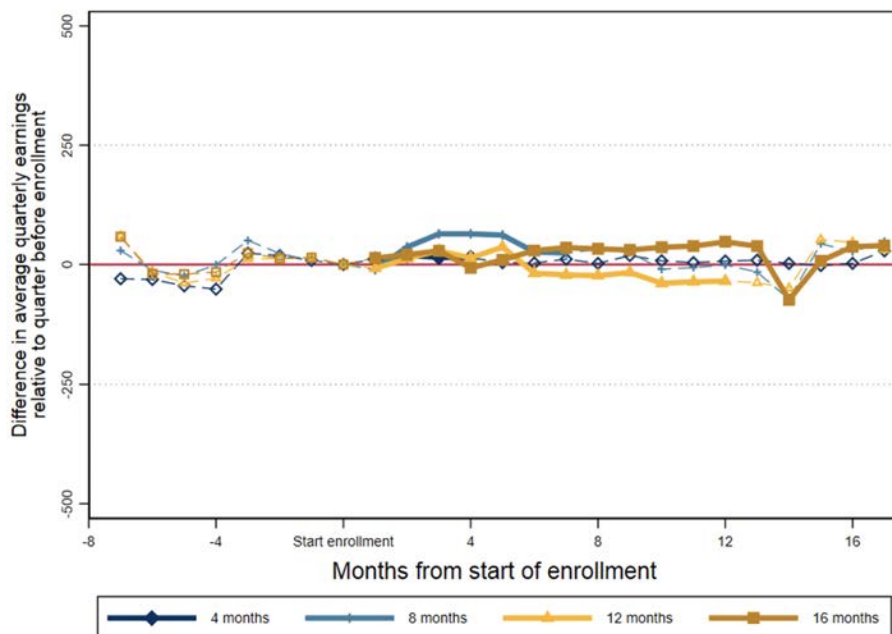
Notes. Appendix Figure 1 summarizes the distribution of unearned income among all SF SNAP cases and SNAP QC cases between 2016 and 2019 and FY 2013 and FY 2018, respectively, separated by households with and without seniors and households with and without earned income.

Appendix Figure 2: Income trends before and after SNAP enrollment, Survey of Income Program and Participation

(a) Earned income

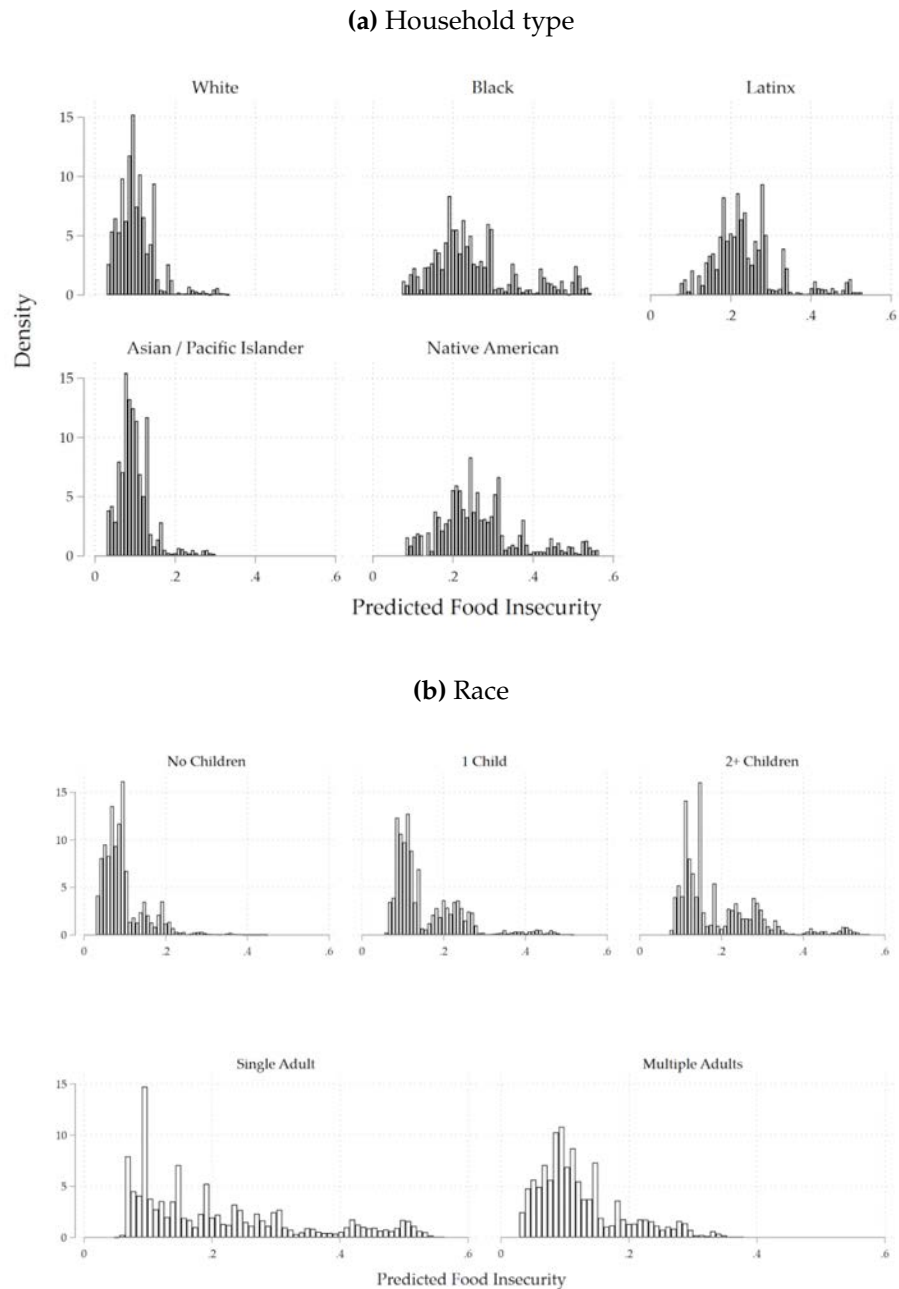


(b) Unearned income



Notes. Appendix Figure 2 use the SIPP to estimate differences in income relative to the month before a SNAP enrollment begins, mirroring Figure 10 in the main paper. I identify each month relative to the first and last month of a continuous SNAP spell for SIPP households. I limit the analysis to households whose SNAP spells coincide with survey waves, and to the household's first SNAP enrollment. I regress total household earnings and total household unearned income on indicators for each month relative to the month preceding the start of the SNAP spell, an indicator for the length of the spell, and the interaction between the two. I also include household type, state, and year controls. Each figure plots the coefficient on the interaction term.

Appendix Figure 3: Distribution of predicted food insecurity measure by household type and race, Current Population Survey, 2005-2018



Notes. Appendix [Figure 3](#) summarizes distribution of predicted food insecurity by household type and race from CPS. Data is from the December CPS (2005-2018). Sample includes all individuals in the CPS with nonmissing demographic characteristics who are included in the universe for the FSS food security measure.